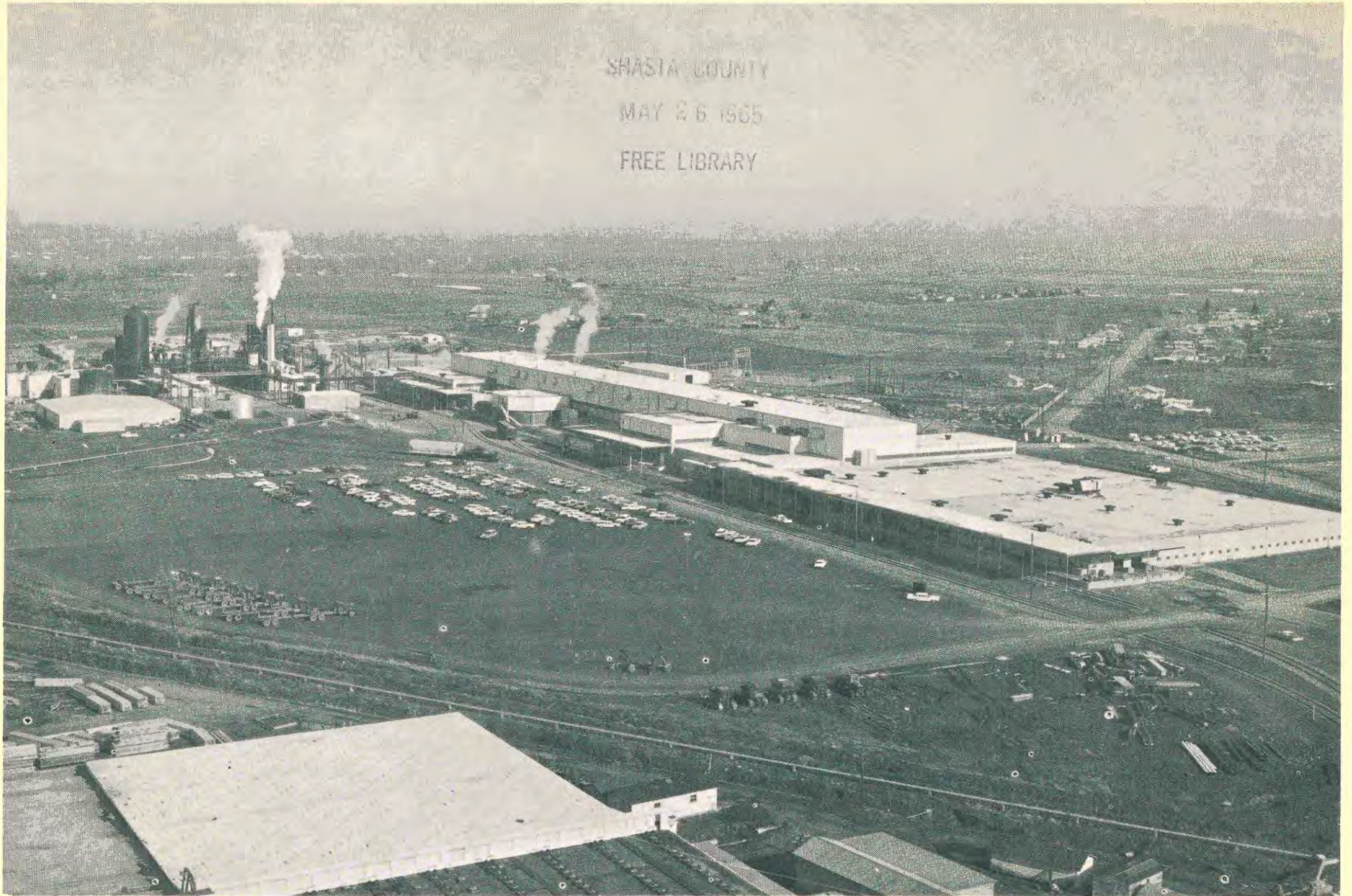


979.424 Shasta Co. - U2



**SHASTA COUNTY CROP REPORT - 1964**

### THE COVER PICTURE

COURTESY OF KIMBERLY-CLARK CORPORATION

The Shasta Division of Kimberly-Clark Corporation is located near Anderson on Interstate Route No. 5 in the south part of Shasta County. The new pulp and paper manufacturing facility which opened this year will produce pulp and fine printing papers, utilizing residue from sawmill operations in the County. Kimberly-Clark also operates a sawmill and woods products manufacturing facility adjacent to the pulp/paper site. Kimberly - Clark has employed the most efficient machinery and processes available in its odor abatement system and waste water treatment facilities plant. Every effort is being made to make the operation of this important industry compatible with agriculture as well as residential development.

S H A S T A   C O U N T Y  
D E P A R T M E N T   O F   A G R I C U L T U R E

C. BRUCE WADE  
AGRICULTURAL COMMISSIONER

# ANNUAL CROP REPORT

FOR

YEAR ENDING -- DECEMBER 31, 1964

CHARLES PAUL, DIRECTOR

CALIFORNIA DEPARTMENT OF AGRICULTURE

SHASTA COUNTY

B O A R D   O F   S U P E R V I S O R S

NORMAN A. WAGONER	Chairman . . . . .	District 3
JOHN PEREZ	. . . . .	District 2
HENRY F. KEEFER	. . . . .	District 1
JONATHAN C. TIBBITTS	. . . . .	District 4
FLOYD H. MORGAN	. . . . .	District 5

SHASTA COUNTY  
DEPARTMENT OF AGRICULTURE  
Redding, California

TO THE DIRECTOR OF THE CALIFORNIA DEPARTMENT OF AGRICULTURE  
AND THE HONORABLE BOARD OF SUPERVISORS OF SHASTA COUNTY

Gentlemen:

The following is a report of the acreage, condition, production and value of the Agricultural products in Shasta County for the year 1964, submitted in accordance with Section 65.5 of the California Agricultural Code. This report represents gross value of production and does not attempt to indicate net farm income or cost of production. This report also includes revisions of some figures previously reported for 1963.

Dry weather conditions during the spring and summer of 1964 had an adverse effect upon several crops. Olive production was sharply reduced and low prices prevented harvesting of some acreage. Honey production and grain production were also reduced because of weather.

Livestock production was relatively stable but prices were generally lower than 1963 which resulted in reduced production value.

The increase noted in vegetable crop production is due to plantings of potatoes in the Fall River Valley. Good quality and satisfactory production have encouraged a substantial increase in potato planting for 1965.

Direct questionnaires to producers have been used in compiling this report. The response has been excellent. We sincerely appreciate the assistance given by the University of California Extension Service and by many other agencies and individuals.

Respectfully Submitted



C. BRUCE WADE  
Agricultural Commissioner

COUNTY DEPARTMENT OF AGRICULTURE

-----

J. C. Rives - - - - Apiary Inspector, Pest Animal Control, Crop Statistics	Philip S. Lang - - - Weights & Measures
Joseph Weber - - - Plant Quarantine, Seed Inspection, Nursery Inspection	Jack B. Hauer - - - Weights & Measures
Frank Stewart - - - Weed Control, Pest Control Business	Irene Kane - - - Secretary
Bob G. Compton - - Fruit Vegetable & Poultry Standards, Weights & Measures	Mable Hayes - - - Typist Clerk

L I V E S T O C K

	YEAR	NO. OF HEAD	LIVE WEIGHT	UNIT	PER UNIT	TOTALS
<b>CATTLE AND CALVES</b>						
Beef Breeding Stock	1964	5,400		HEAD	\$ 187.00	\$ 1,009,000
	1963	5,100		HEAD	205.00	1,045,000
Milk Stock	1964	1,100		HEAD	157.00	172,700
	1963	1,300		HEAD	135.00	175,500
Feeder and Fat (revised) -	1964	21,845	137,700	CWT.	18.00	2,478,600
	1963	25,400	137,000	CWT.	22.00	3,014,000
Cull Stock	1964	1,375	14,000	CWT.	13.50	190,000
	1963	1,200	12,500	CWT.	14.00	175,000
Winter Pasture (revised) -	1964	13,000	16,250	CWT.	18.00	292,500
	1963	11,000	19,800	CWT.	22.00	435,600
TOTALS -- -- -- --					1964	\$ 4,142,800
(revised) --					1963	4,845,100
<b>SHEEP AND LAMBS</b>						
Breeding Stock	1964	925		HEAD	10.20	9,400
	1963	563		HEAD	10.50	5,900
Feeders and Fat Lambs	1964	6,000	5,400	CWT.	20.00	108,000
	1963	4,800	4,460	CWT.	19.00	84,700
TOTALS -- -- -- --					1964	\$ 117,400
(revised) --					1963	90,600
<b>HOGS AND PIGS</b>						
Breeding Stock	1964	900		HEAD	40.50	36,400
	1963	1,100		HEAD	35.75	39,000
Feeders and Fat Hogs	1964	9,020	8,000	CWT.	17.00	136,000
	1963	13,000	9,400	CWT.	20.00	188,000
TOTALS -- -- -- --					1964	\$ 172,400
(revised) --					1963	227,000
<b>CHICKENS</b>						
Cull Hens	1964	9,000	27,000	LBS.	.09	2,430
	1963	19,800	79,200	LBS.	.09	7,130
TOTAL CHICKENS --					1964	\$ 2,430
(revised) --					1963	7,130
TOTAL LIVESTOCK --					1964	\$ 4,435,030
(revised) --					1963	5,169,830

L I V E S T O C K   a n d   P O U L T R Y   P R O D U C T S

	YEAR	PRODUCTION	UNIT	PER UNIT	TOTALS	
MILK						
Market	1964	150,000	CWT.	\$ 4.76	\$ 714,000	
	1963	119,000	CWT.	4.82	574,000	
Manufacturing	1964	57,100	CWT.	3.31	189,000	
	1963	70,600	CWT.	3.70	261,000	
WOOL	1964	36,800	LBS.	.55	20,200	
	1963	35,300	LBS.	.46	16,000	
EGGS	1964	425,000	DOZ.	.37	157,000	
	1963	600,000	DOZ.	.36	216,000	
TOTAL LIVESTOCK PRODUCTS				-- -- --	1964	\$ 1,080,200
					1963	1,067,000

N U R S E R Y   S T O C K

ITEMS	YEAR	ACRES	PER ACRE	PLANTS	PRICE	TOTALS
STRAWBERRY PLANTS	1964	300	300 M.	90,000 M.	\$ 12.00	\$ 1,080,000
	1963	350	275 M.	96,000 M.	12.00	1,150,000

V E G E T A B L E   C R O P S

TRUCK CROPS	1964	400			\$522.50	\$ 209,000
	1963	140			175.00	24,500

T R E E   C R O P S

	YEAR	BEARING ACRES	PER ACRE	TOTAL PRODUCTION	UNIT	UNIT PRICE	TOTALS
Apples	1964 1963	410 410					\$ 210,000 155,000
Peaches							
Persimmons							
Cherries							
Prunes							
Olives	1964	800	500 #	200	TONS	\$ 150.00	30,000
	1963	793	1,100 #	436	TONS	160.00	69,800
Walnuts	1964	288	1,500 #	216	TONS	540.00	117,000
	1963	288	1,300 #	187	TONS	550.00	103,000
TOTAL TREE CROPS				-- -- --		1964	\$ 357,000
						1963	327,800

F I E L D   C R O P S

CROP	YEAR	HARVESTED ACRE	PER ACRE	TOTAL	UNIT	PER UNIT	TOTALS
GRAIN							
Barley	1964	1,500	930 #	700	TONS	\$ 45.00	31,500
	1963	1,600	1,000 #	800	TONS	50.00	40,000
Oats	1964	160	700 #	56	TONS	57.00	3,200
	1963	250	1,200 #	150	TONS	48.00	7,200
Wheat	1964	575	1,000 #	287	TONS	47.00	13,500
	1963	320	1,200 #	190	TONS	60.00	11,400
HAY							
Alfalfa	1964	6,500	3.5 T.	22,750	TONS	26.00	591,000
	1963	5,700	3 T.	17,000	TONS	27.00	459,000
Other Hay	1964	16,400	1.5 T.	24,600	TONS	20.00	492,000
	1963	12,600	1.7 T.	21,420	TONS	22.00	471,000
Silage	1964	725	11 T.	7,975	TONS	11.00	87,700
	1963	450	15 T.	6,750	TONS	11.00	74,000
PASTURE							
Irrigated	1964	34,325				42.00	1,442,000
	1963	30,000				42.00	1,260,000
Improved	1964	50,400				2.00	100,800
	1963	46,000				4.00	184,000
Other	1964	443,000				1.00	443,000
	1963	450,000				1.00	450,000
TOTAL FIELD CROPS						-- -- --	
						1964	\$ 3,204,700
						1963	2,956,600

A P I A R Y   P R O D U C T S

	YEAR	PRODUCTION	UNIT	UNIT PRICE	TOTALS
HONEY	1964	122,000	LBS.	\$ .13	\$ 15,900
	1963	278,000	LBS.	.14	39,000
BEES WAX	1964	3,000	LBS.	.46	1,380
	1963	5,000	LBS.	.44	2,200
PACKAGE BEES	1964	54,000	LBS.	1.20	64,800
	1963	60,000	LBS.	1.20	72,000
QUEENS	1964	69,000	EACH	1.35	93,100
	1963	64,000	EACH	1.25	80,000
POLLINATION	1964	5,100	COL.	2.50	12,800
	1963	5,000	COL.	2.50	12,500
TOTAL APIARY PRODUCTS				1964	\$ 188,080
				1963	205,700

G R O S S   V A L U E   A L L   C R O P S

	1963	1964
SHASTA COUNTY - - -	1963	1964
LIVESTOCK	(revised) -- \$ 5,169,830	\$ 4,435,030
LIVESTOCK PRODUCTS	1,067,000	1,080,200
NURSERY	1,150,000	1,080,000
VEGETABLE CROPS	24,500	209,000
APIARY	205,700	188,080
FIELD CROPS	2,956,600	3,204,700
TREE CROPS	327,800	357,000
(revised) -- \$	10,901,430	\$ 10,554,010