

Shasta County

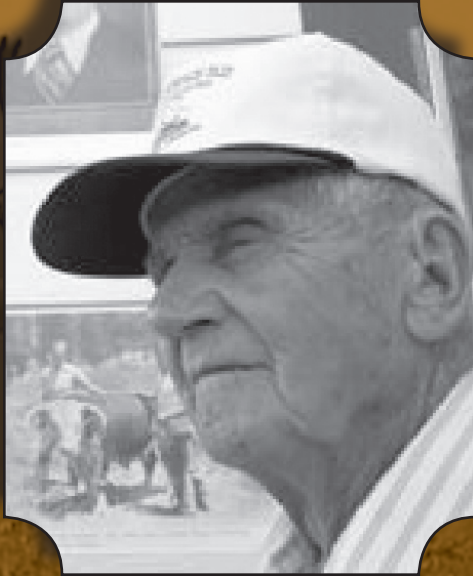


2008

Crop & Livestock Report

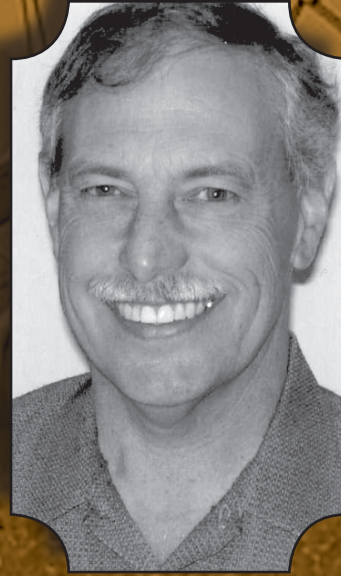
Honoring Our Agricultural Pioneers

Recently Shasta County saw the passing of two dynamic individuals who have both made important contributions to the County's agricultural heritage. Beginning in the 20th century and continuing through the 21st century, each one has not only contributed to the County's rich agricultural legacy, but has also made lifelong contributions to their communities.



Albert Albaugh

Albert Albaugh was born and raised in McArthur and was an active, influential member of the community for all of his 90 years. He could often be found in his large vegetable garden on his farm or holding a trophy at the fair for growing the largest pumpkin. After serving in World War II, he returned to McArthur to marry his wife Liz, and begin his lifelong work to serve his family and community. Albert managed three different ranches along with 400 head of cattle and still made time for the local fundraisers and youth oriented activities. His dedication to the community included work to establish the Mayer's Memorial Hospital, the Fall River-Big Valley Cattlemen's Association, and the Pine Grove Mosquito Abatement District. He was the President of the Shasta County Farm Bureau in the 60's, an Intermountain Fair Board member for over 20 years, and worked tirelessly to make the McArthur Fair the gem it is today.



Andy Peek

Andy Peek was a major presence within the cattle and livestock industry throughout the Western United States. Not only did he run several thousand head of cattle in the tri-state area, but he was also manager of the Shasta Livestock Auction, the largest of its kind in the west, buying and selling in excess of \$300 million dollars worth of livestock a year. He was also President of Western Video Market, an innovative livestock marketing tool used to connect buyers and sellers through satellite or video broadcasting. Raised in Shasta County, Andy was very involved in agriculture, through his activities at the Shasta District Fair, National and California Livestock Marketing Associations, Shasta College Ag Advisory Board, Shasta County Farm Bureau, and California Cattlemen's Association.

**TO: A. G. Kawamura, Secretary
California Department of Food and Agriculture**

The Honorable Board of Supervisors, County of Shasta

**Glenn Hawes, Chairman, District 3
David A. Kehoe, District 1
Leonard Moty, District 2
Linda Hartman, District 4
Les Baugh, District 5**

Lawrence G. Lees, County Administrative Officer

I am pleased to submit, in accordance with Section 2279 of the California Food and Agricultural Code, Shasta County's Annual Crop and Livestock Report for 2008. This report summarizes the acreage, production, and gross value of agricultural commodities and livestock produced in Shasta County. It does not attempt to show county inventory, cost of production, or net farm income.

The value of agricultural products produced in the County decreased slightly to \$74,014,100, less than a 1% decline from the previous year. This can be attributed to factors such as lower cattle prices, a reduction in planted acres, and a late spring freeze.

The value of strawberry nursery stock decreased due to a reduction in acreage throughout the county. Field crops were up 10% due to an increase in yields and higher prices received for many of the commodities. Orchard crops experienced a 40% decrease as a result of the late spring freeze and substantial declines in prices received for walnuts.

Apiary products showed an overall decrease of approximately 5%, primarily due to a reduction in the number of pollination contracts. However, honey production was up, along with increased sales of queen bees. The value of packaged bees, beeswax, and other miscellaneous bee products also increased nearly 30%.

This report also includes a summary of notable pest exclusion, detection, and eradication efforts which have been completed by the Department in 2008.

I would like to thank the many producers, agricultural business representatives, and public agencies who have cooperated in supplying the data necessary to produce this report. Development of this report was completed under the leadership of Agricultural Investigators Carl Yingst and John Ingram

Sincerely,



MARY PFEIFFER
Agricultural Commissioner

Mission Statement

Mission Statement

The Shasta County Department of Agriculture and Weights and Measures is entrusted with the mission of promoting and protecting the agricultural industry of the County and its environment, ensuring the health and safety of the County's citizens, and fostering confidence and equity in the marketplace through education and the fair and uniform enforcement of laws, regulations, and ordinances enacted by the people of the State of California and the County of Shasta.

Staff

Agricultural Commissioner/Sealer of Weights and Measures

Mary Pfeiffer

Deputy Agricultural Commissioner/Deputy Sealer

Paul Kjos

Agricultural and Standards Investigators

John Ingram

Kevin Martyn

Caryn Moen

James Staggs

Carl Yingst

Agricultural and Standards Program Associate

Ray Abernathy

Agricultural and Standards Program Assistants

Danial Dupont Marci Fernandes

Administrative Staff

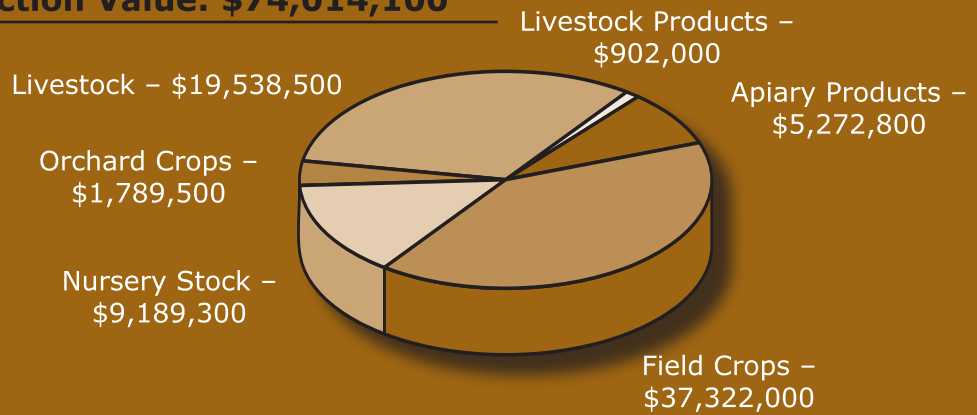
Mel Howard, Agency Staff Services Analyst II

Sherry Quaife, Administrative Secretary II

Lori Peisker, Typist Clerk III

Shasta County Livestock & Crop Summary

2008 Total Production Value: \$74,014,100

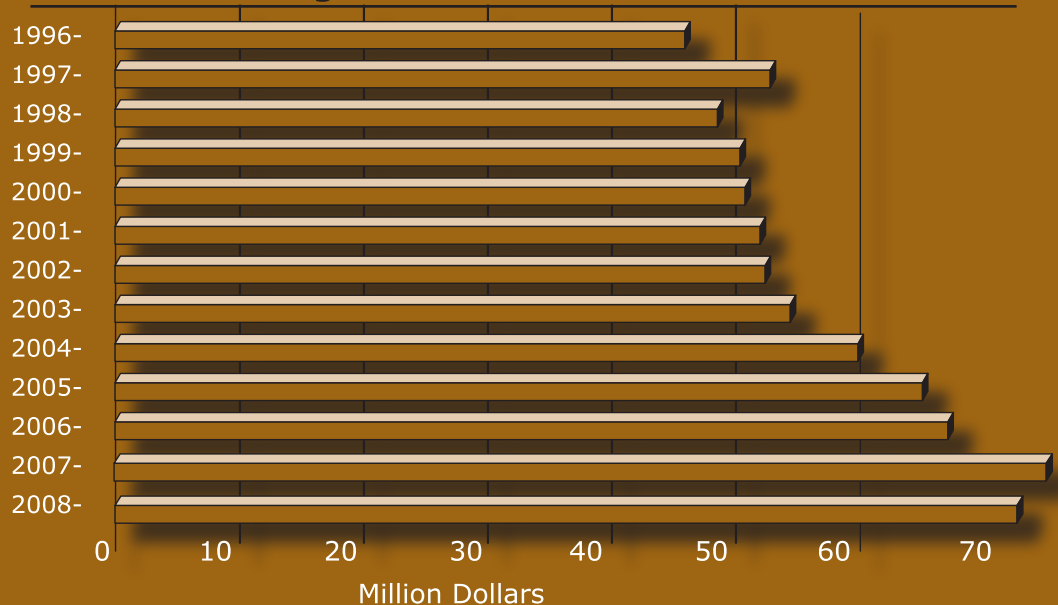


Comparison Summary

	2008	2007	2006	2005
Livestock	\$19,538,500	\$21,155,200	\$21,345,800	\$22,894,300
Livestock Products	902,000	1,008,500	768,200	885,000
Apiary Products	5,272,800	5,565,200	5,572,000	3,568,300
Field Crops	37,322,000	33,509,100	26,855,900	22,826,600
Nursery Stock	9,189,300	10,817,200	9,288,900	11,774,200
Orchard Crops	1,789,500	2,488,400	2,396,600	2,255,600
TOTALS	\$74,014,100	\$74,543,600	\$66,227,400	\$64,204,000
Timber	\$33,600,995	\$43,948,866	\$50,460,525	\$43,469,158
Other Forest Prods.	\$23,246,000	\$23,456,000	\$23,006,700	\$20,889,700

Totals may not add due to rounding

Total Value of Agricultural Products 1996-2008



Livestock Production

Item	Year	No.Head	Total Liveweight	Unit	Avg/Unit	TOTAL
CATTLE & CALVES						
Feeders	2008	16,500	116,655	cwt	91.54	\$10,678,600
	2007	16,500	116,325	cwt	97.03	11,287,000
Slaughter Cattle	2008	2,900	35,538	cwt	41.08	1,460,000
	2007	2,800	38,640	cwt	44.65	1,725,300
Breeding Stock	2008	3,100		head	844.00	2,616,000
	2007	3,200		head	1,069.00	3,420,800
Pasture Cattle	2008	8,370	17,610	cwt	93.60	1,648,300
	2007	9,300	19,530	cwt	92.50	1,806,500
TOTAL CATTLE	2008					\$16,402,900
	2007					\$18,239,600
SHEEP & LAMBS	2008	2,500	2,375	cwt	91.30	216,800
	2007	2,500	2,375	cwt	90.50	214,900
SWINE All Classes	2008	1,000	1,100	cwt	48.00	52,800
	2007	1,000	1,100	cwt	48.80	53,700
OTHER LIVESTOCK (Fish, Poultry, Goats, etc.)	2008					2,866,000
	2007					2,647,000
TOTAL LIVESTOCK	2008					\$19,538,500
	2007					\$21,155,200

Livestock Products

Item	Year	TOTAL
Livestock Prods.	2008	\$902,000
	2007	\$1,008,500

Forest Products

Item	Year	Production	Unit	TOTAL
TIMBER	2008	216,618	million bd. ft.	\$33,600,995
	2007	191,618	million bd. ft.	\$43,948,866
MISC. FOREST PRODUCTS	2008			\$23,246,000
	2007			\$23,456,000

Field Crops

Crop	Year	Harvested Acres	Per Acre	Total	Unit	Avg/Unit	TOTAL
WILD RICE	2008	6,300	1,605	10,111,500	lb	.93	\$9,403,700
	2007	5,500	1,352	7,436,000	lb	.83	6,171,900
MINT	2008	1,400	90	126,000	lb	15.00	1,890,000
	2007	1,700	63	107,100	lb	13.45	1,440,500
MISC CROPS (Grain, Seed, Truck Crops, etc.)	2008						888,600
	2007						505,300
HAY							
Grass	2008	3,100	3.8	11,780	ton	225.00	2,650,500
	2007	*					
Alfalfa	2008	3,000	5.2	15,600	ton	177.00	2,761,200
	2007	5,500	6.7	36,850	ton	146.00	5,380,100
Other Hay	2008	14,000	3.5	49,000	ton	185.00	9,065,000
	2007	15,000	3.6	54,000	ton	170.00	9,180,000
Timothy Hay	2008	2,400	6.0	14,400	ton	270.00	3,888,000
	2007	2,500	5.9	14,750	ton	275.00	4,056,300
PASTURE							
Irrigated	2008	33,000			acre	100.00	3,300,000
	2007	33,000			acre	100.00	3,300,000
Improved	2008	100,000				12.00	1,200,000
	2007	100,000			acre	12.00	1,200,000
Rangeland	2008	325,000			acre	7.00	2,275,000
	2007	325,000			acre	7.00	2,275,000
TOTAL FIELD CROPS	2008						\$37,322,000
	2007						\$33,509,100

*Previously included in Other Hay

Orchard Crops

Crop	Year	Harvested Acres	Per Acre	Total	Unit	Avg/Unit	TOTAL
WALNUTS	2008	940	0.88	827	ton	1,097.00	\$907,219
	2007	913	0.76	694	ton	2,000.00	\$1,388,000
FRUIT & NUT CROPS (Apples, Olives, Stone Fruit, Grapes, Kiwis, Pistachios, etc.)	2008						882,300
	2007						1,100,400
TOTAL ORCHARD CROPS	2008						\$1,789,500
	2007						\$2,488,400

Apiary Products

Item	Year	Production	Unit	Avg/Unit	TOTAL
HONEY	2008	149,490	lb	1.59	\$237,700
	2007	133,400	lb	1.03	137,400
QUEENS	2008	111,000	ea	15.54	1,724,900
	2007	78,400	ea	13.75	1,078,000
NUCLEI	2008	5,482	ea	58.38	320,000
	2007	6,450	ea	58.80	379,300
POLLINATION	2008	16,512 colonies		153.32	2,531,600
	2007	24,600 colonies		147.00	3,616,200
MISC APIARY PRODUCTS (Includes Package Bees, Beeswax, and Medicinal Bees)	2008				458,600
	2007				354,300
TOTAL APIARY PRODUCTS	2008				\$5,272,800
	2007				\$5,565,200

* Revised



2008 Agricultural Export Trade Partners

2008 Agricultural Export Trade Partners

International trade is a vital component of Shasta County's agricultural economy. Commodities produced here are shipped worldwide each year. Shasta County agricultural products were exported to the following thirty-three countries in 2008.



Argentina	France	Mexico
Australia	Germany	Netherlands
Canada	Guatemala	Panama
China	India	Philippines
Colombia	Indonesia	Portugal
Costa Rica	Ireland	Spain
Cyprus	Italy	Sri Lanka
Dominican Republic	Jordan	Tunisia
Ecuador	Korea	United Kingdom
Egypt	Kuwait	Venezuela
Ethiopia	Malaysia	Viet Nam

Nursery Stock

Nursery Stock

Crop	Year	Harvested Acres	Plants /Acre	Total	Unit	Avg/ Unit	TOTAL
STRAWBERRY PLANTS	2008	288	301	86,688	1,000s	77.13	\$6,686,200
	2007	357	310	110,670	1,000s	72.14	7,983,700
CHRISTMAS TREES	2008			13,975		10.24	143,100
	2007			5,612		13.12	73,700
OTHER NURSERY STOCK (Turf, Ornamentals, Mint, etc.)	2008						2,360,000
	2007						2,750,300
TOTAL NURSERY STOCK	2008						\$9,189,300
	2007						\$10,807,700

2008 Sustainable Agriculture Report

Significant pest interceptions included Armored Scale, Banded Wood Snail, White Footed Ant, Bigheaded Ant, Noctua Pronuba, Madagascar Hissing Roach, Chrysanthemum White Rust, Purple Scale, Water Lettuce, Russian Knapweed.

Pest Exclusion

Inspection Type	Premises Visited	Shipments Inspected	Rejections	Pest Interceptions
Post Office	238	2486	63	2
United Parcel Service	20	2964	0	0
Federal Express	190	2411	11	17
Air Freight	2	2	0	2
Gypsy Moth	5	27	0	0
Truck	97	606	0	2
Other	10	6	0	1

Pest Detection

Trap Name	Number of Traps Deployed
Jackson Trap	
Mediterranean Fruit Fly	190
Melon Fruit Fly	80
Oriental Fruit Fly	80
Delta Trap	
Gypsy Moth	350
Japanese Beetle Trap	
Japanese Beetle	80
Olive Fruit Fly and Temperature Data Station	2
Glassy-winged Sharpshooter	300
Light Brown Apple Moth	190

Pest Eradication

Pest	Agent/Mechanism	Scope of Program
Ailanthus, Canada Thistle, Chinese Wisteria, Dalmation Toadflax, Diffuse Knapweed, Marlahan Mustard, Mediterranean Sage, Musk Thistle, Oblong Spurge, Perennial Pepperweed, Scotch Broom, Scotch Thistle, Skeletonweed, Spotted Knapweed, Squarrose Knapweed.	Integrated Vegetation Management	372 sites spread over 36,200 acres throughout the County

Pest Management – Biological Control

Pest	Agent/Mechanism	Scope of Program
Yellow Starthistle <i>Centaurea solstitialis</i>	Flower Weevil - <i>Larinus curtus</i> Seed Weevil - <i>Bangasternus orientalis</i> Hairy Weevil - <i>Eustenopus villosus</i> Gall Fly - <i>Urophora sirunaseva</i> Peacock Fly - <i>Chaetorellia australis</i> YST Rust Fungus - <i>Puccinia jaceae var solstitialis</i>	4 Experimental Sites Generally distributed Generally distributed Generally distributed Generally distributed 6 Experimental Sites
Bull Thistle <i>Cirsium vulgare</i>	Gall Fly - <i>Urophora stylata</i>	1 Experimental Site
Spotted Knapweed <i>Centaurea maculosa</i>	Gall Fly - <i>Urophora quadrifasciata</i> Gall Fly - <i>Urophora affinis</i> Lesser Knapweed Weevil - <i>Larinus minutus</i> Root Moth - <i>Agapeta zoegana</i> Root Boring Weevil - <i>Cyphocleonus achates</i> Seedhead Weevil - <i>Bangasternus fausti</i> Seedhead Fly - <i>Terellia virens</i>	Established Established Established Established Established Established
Squarrose Knapweed <i>Centaurea squarrosa</i>	Lesser Knapweed Weevil - <i>Larinus minutus</i> Bronze Rootborer - <i>Sphenoptera jugoslavica</i>	1 Experimental Site 1 Experimental Site
Purple Loosestrife <i>Lythrum salicaria</i>	Leaf Beetles - <i>Galerucella californiensis</i> - <i>Galerucella pusilla</i> Seed Weevil - <i>Nanophyes marmoratus</i> Root Weevil - <i>Hylobius transversovittatus</i>	5 Established Sites 3 Established Sites 4 Experimental Sites 5 Experimental Sites
Puncture Vine <i>Tribulus terrestris</i>	Seed Weevil - <i>Micolarinus lareynii</i> Stem Weevil - <i>Micolarinus lypriformis</i>	Generally dist. low elevation Generally dist. low elevation
St. Johnswort (Klamath Weed) <i>Hypericum perforatum</i>	Klamath Weed Beetle - <i>Chrysolina sp.</i>	Generally distributed
Red Gum Lerp Psyllid <i>Glycaspis brimblecombei</i>	Psyllid Parasitoid Wasp - <i>Psyllaephagus bliteous</i>	2 Experimental Sites

Direct Marketing and Organic Farming

Direct Marketing Program

Direct marketing is a system that allows Certified Producers to market their agricultural products directly to consumers via Certified Farmers Markets. The Agricultural Commissioner's Office regulates this program to insure that only certified agricultural products are sold at Certified Farmers Markets.

Certified Farmers Markets..... 7
 Certified Producers40

Registered Organic Grower Program

Organic Product	Number of Farms	Estimated Acres
Fruits, Vegetables, Nuts, Grains, Forage, Cattle, Dairy	31	7,727



Shasta County
Department of Agriculture
Weights and Measures

3179 Bechelli Lane, Suite 210 • Redding, CA 96002
Tel: 530.224.4949 • 1.800.479.8009 • Fax: 530.224.4951 • shastaag@co.shasta.ca.us