



DEPARTMENT OF RESOURCE MANAGEMENT

Building Division

1855 Placer Street, Suite 102

Redding, California 96001

Phone: (530) 225-5761 Fax: (530) 245-6468

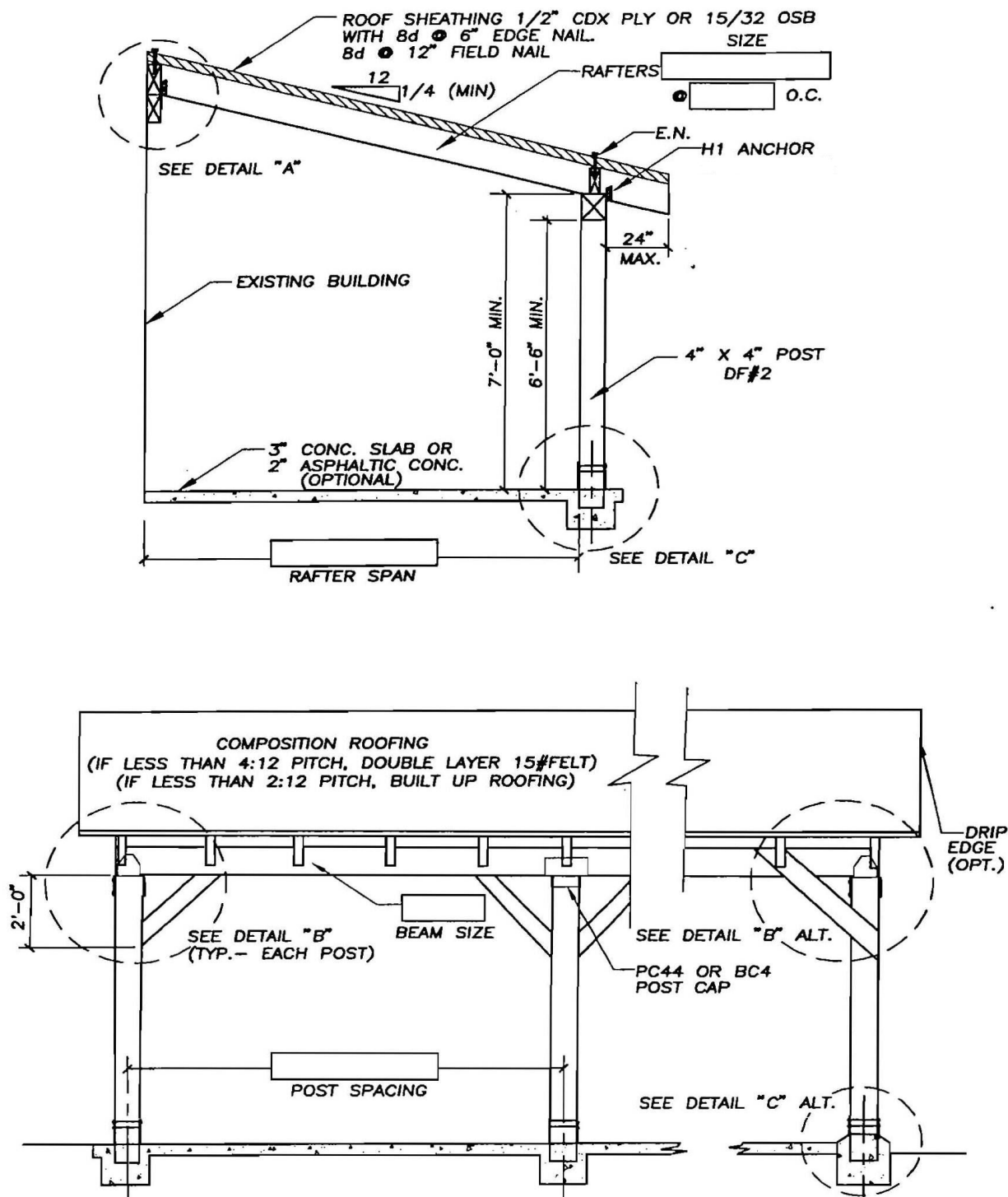
Inspection Request Line: (530) 244-5068

Web: shastacounty.gov/resource-management Email: resourcemanagement@co.shasta.ca.us

RESIDENTIAL PATIO COVERS

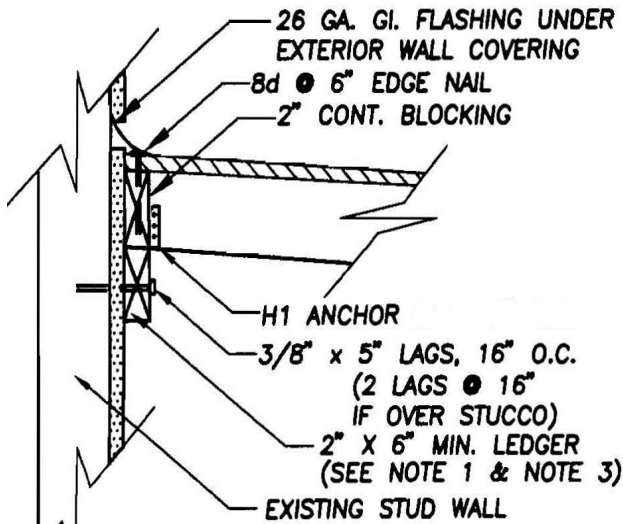
(Rev: 01-03-23)

This handout is intended to cover simple span patio covers in areas with a roof snow load of 30 pounds or less. Spans are limited to 12' and covers are to be no more than 10' in height.

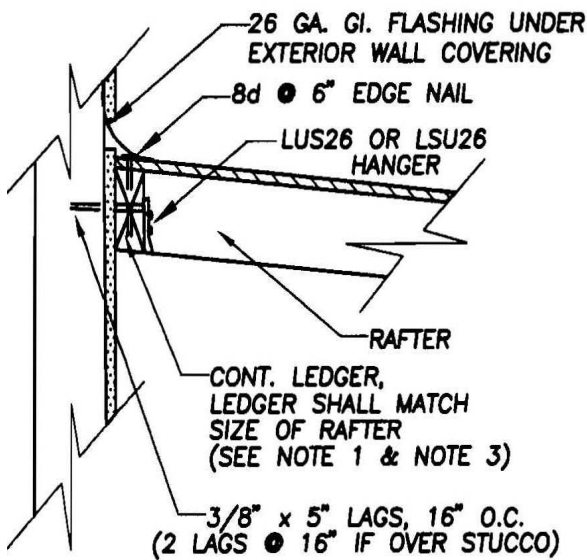


NOTES

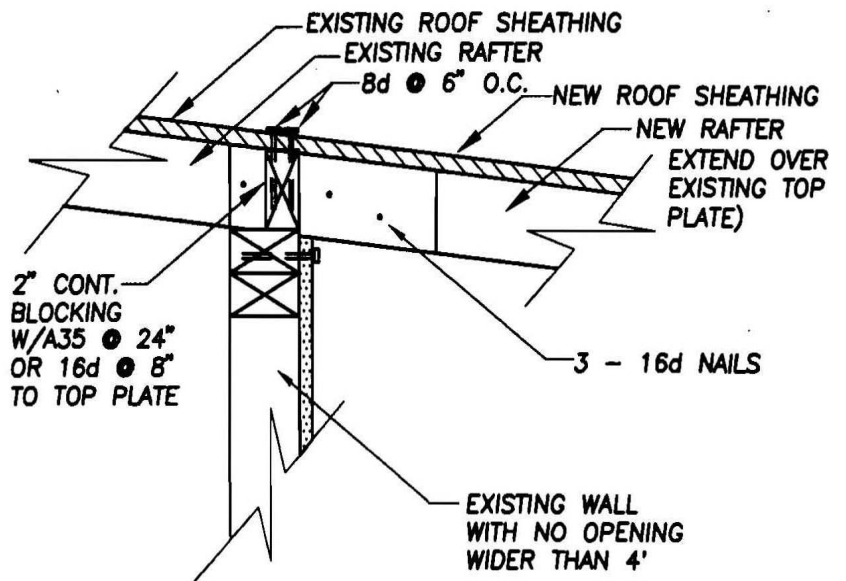
1. LEDGERS OVER DOORS & WINDOWS SHALL BE CONTINUOUS AND EXTEND 4' PAST OPENING. USE 2" X 8" MIN. LEDGER OVER 6' OPENING WITH (6) 3/8" X 5" LAG BOLTS TO STUDS, EACH SIDE OF OPENING (2 PER STUD).
2. IF RAFTERS ARE TO BE SUPPORTED BY EXISTING EAVE OVERHAND, ENGINEERING REQUIRED.
3. DO NOT CUT EXISTING STRUCTURAL SIDING. (INSULATING FOAM IS NOT STRUCTURAL SIDING. REMOVE FOAM BEHIND LEDGER.)
4. PRE-DRILL LEAD HOLES FOR LAG BOLTS:
1/4" HOLE FOR THREADED PORTION,
3/8" HOLE FOR SHANK.
5. PROVIDE PLOT PLAN SHOWING THE LOCATION OF ALL EXISTING BUILDINGS ON LOT WITH DIMENSIONS TO LOT LINES AND BETWEEN BUILDINGS.
6. CONNECTORS MUST BE APPROVED. INSTALL NAILS OR BOLTS IN CONNECTORS IN ACCORDANCE WITH MANUFACTURERS INSTRUCTIONS.
7. PROVIDE SMOKE DETECTORS AS REQUIRED



DETAIL "A"



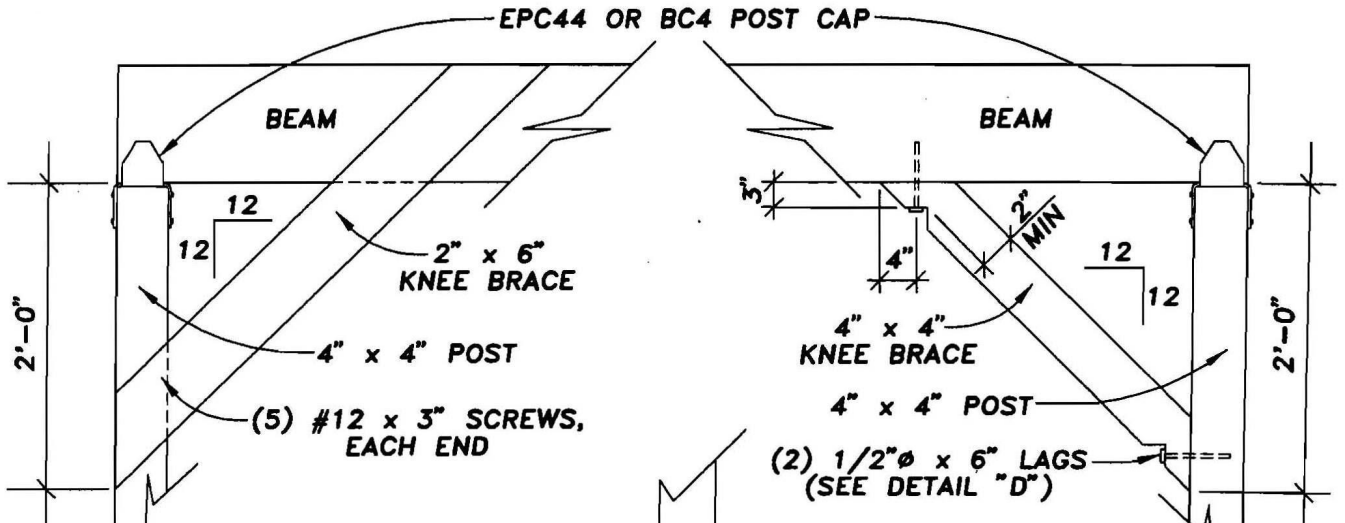
DETAIL "A"
ALTERNATE



DETAIL "A"
ALTERNATE

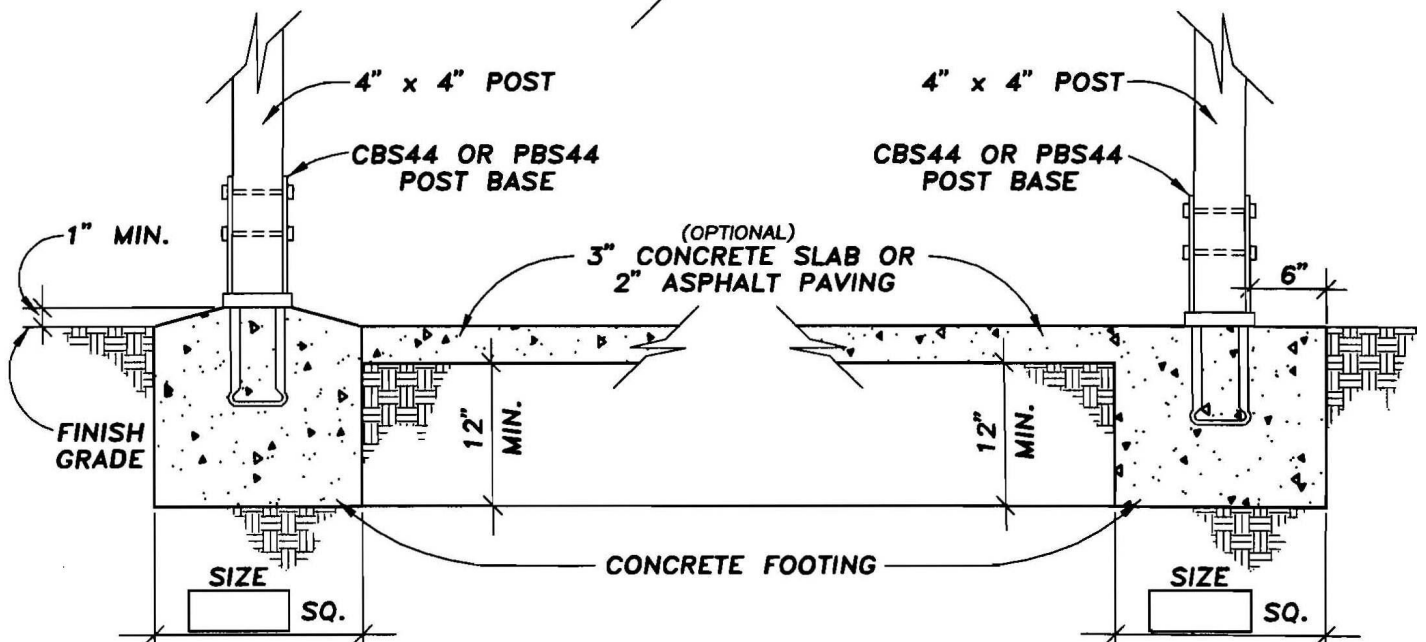
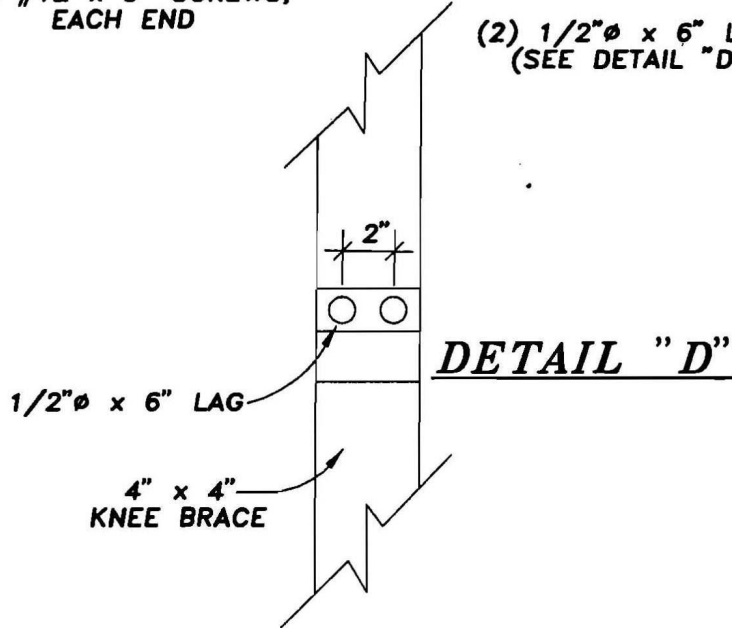
RESIDENTIAL PATIO COVERS

(Rev: 01-03-23)



DETAIL "B" ALTERNATE

DETAIL "B"



DETAIL "C" ALTERNATE

DETAIL "C"

RESIDENTIAL PATIO COVERS

(Rev: 01-03-23)

TABLE A – MINIMUM SQUARE FOOTING SIZE IN INCHES – 30 POUND OR LESS SNOW LOADS

Post Spacing	Rafter Span in Feet			
	6	8	10	12
<u>4</u>	12	12	12	12
<u>6</u>	12	12	12	15
<u>8</u>	12	15	15	15
<u>10</u>	15	15	18	18
<u>12</u>	15	18	18	20

TABLE B – MINIMUM RAFTER SIZE - #2 DOUGLAS FIR – 30 POUND OR LESS SNOW LOADS

Rafter Span in feet	Rafter Spacing Center to Center in inches		
	12	16	24
<u>6</u>	2 x 4	2 x 4	2 x 4
<u>7</u>	2 x 4	2 x 4	2 x 4
<u>8</u>	2 x 4	2 x 6	2 x 6
<u>9</u>	2 x 6	2 x 6	2 x 6
<u>10</u>	2 x 6	2 x 6	2 x 8
<u>11</u>	2 x 6	2 x 6	2 x 8
<u>12</u>	2 x 6	2 x 6	2 x 8

TABLE C - MINIMUM BEAM SIZES - #2 DOUGLAS FIR -- 30 POUND OR LESS SNOW LOADS

Post Spacing in feet	Rafter Span in Feet			
	6	8	10	12
<u>4</u>	4 x 4	4 x 4	4 x 6	4 x 6
<u>6</u>	4 x 6	4 x 6	4 x 6	4 x 6
<u>8</u>	4 x 6	4 x 6	4 x 8	4 x 8
<u>10</u>	4 x 8	4 x 8	4 x 10	4 x 10
<u>12</u>	4 x 8	4 x 10	4 x 12	4 x 12