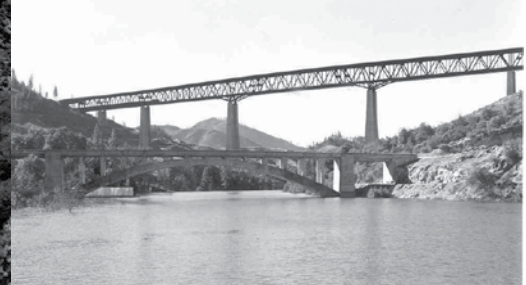
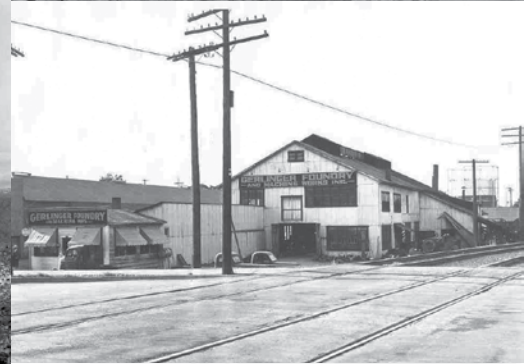


Adopted Budget Fiscal Year 2017-2018

Recommended by Lawrence G. Lees, County Executive Officer
Compiled by Brian Muir, Auditor-Controller



Photos Courtesy of The Bureau of Reclamation & Shasta County

COUNTY OF SHASTA
BUDGET
FOR
FISCAL YEAR 2017 -18



Recommended by
Lawrence G. Lees
County Executive Officer



Compiled by
Brian Muir
County Auditor-Controller



David A. Kehoe
2017 Chair
District 1



Leonard Moty
District 2



Mary Rickert
District 3



Steve Morgan
District 4



Les Baugh
District 5

SHASTA COUNTY BOARD OF SUPERVISORS



SHASTA COUNTY OFFICIALS – FY 2017-18

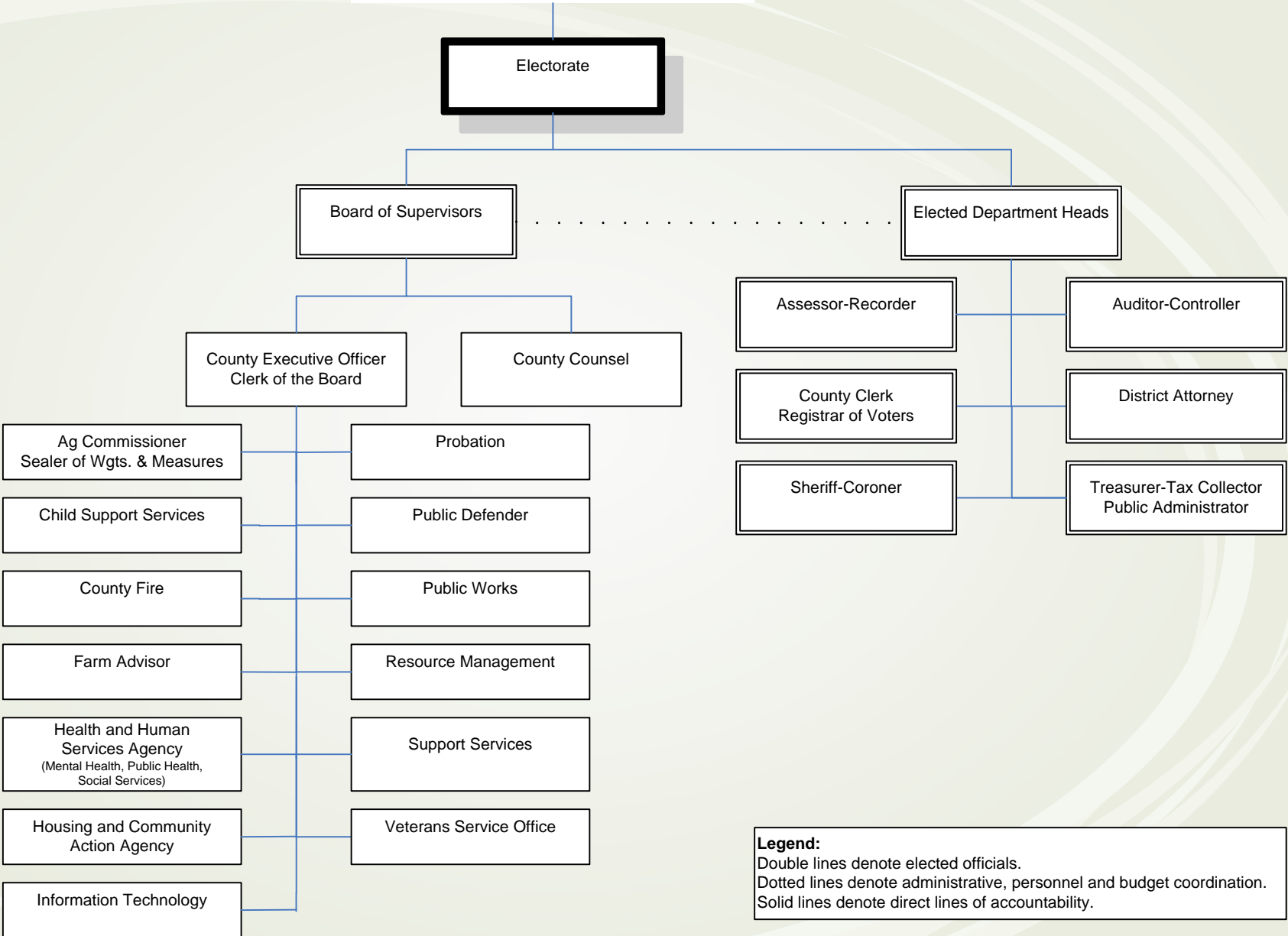
ELECTED

Leslie Morgan	Assessor-Recorder
Brian Muir	Auditor-Controller
Catherine Darling Allen	County Clerk/Registrar of Voters
Stephanie Bridgett	District Attorney
Tom Bosenko	Sheriff/Coroner
Lori J. Scott	Treasurer/Tax Collector/Public Administrator

APPOINTED

Paul Kjos	Agricultural Commissioner/Sealer of Weights & Measures
Tracie Neal	Chief Probation Officer
Thomas Schreiber	Chief Information Officer
Terri M. Morelock	Child Support Services Director
Lawrence G. Lees	Clerk of the Board of Supervisors
Lawrence G. Lees	County Executive Officer
Rubin E. Cruse, Jr.	County Counsel
Larry Forero	Farm Advisor
Mike Hebrard	Fire Warden
Donnell Ewert, M.P.H.	Health and Human Services Agency Director
Richard W. Kuhns, Psy.D.	Housing/Community Action Agency Director
Jeffrey Gorder	Public Defender
Patrick J. Minturn	Public Works Director
Richard Simon	Resource Management Director
Angela Davis	Support Services Director
Tommy Key	Veterans Service Officer

County of Shasta
Organizational Chart
May 2017



Legend:
 Double lines denote elected officials.
 Dotted lines denote administrative, personnel and budget coordination.
 Solid lines denote direct lines of accountability.