

2022 ANNUAL REPORT



*Shasta County Fire Department
in Cooperation with CAL FIRE*

TABLE OF CONTENTS

Table of Contents	2
Mission Statement	3
Shasta County Fire Department Values	4
Message from the Chief	5
Shasta County Board of Supervisors	6
Organizational Chart	7
Volunteer Years of Service	8
2022 Shasta County Volunteer Fire Station Calls	9
2022 CAL FIRE Shasta County Response	10
2022 SCFD Chief Officer and Prevention Calls	11
Redding Emergency Command Center (ECC)	12
Training	13
Fire Prevention & Law Enforcement	14
Fire Marshal & Protection Planning	15
Fleet Services	16
Management Services.....	17
Service Center	18
Battalion I	19-20
Battalion II	21
Battalion III	22-23
Battalion IV	24-25
Battalion V	26-27
Battalion VII	28-29
Shasta Cascade Hazardous Materials Response Team	30
Shasta County Fire Department Boat Program	31
Redding Air Attack Base (RAAB)	32
Shasta County Fire Department EMS	33

MISSION STATEMENT

To stand ready to protect life, property, and the environment utilizing trained and equipped personnel. The mission includes structural and wildland fire control, first response medical care and appropriate assistance to other agencies during emergency incidents.

VISION STATEMENT

To provide emergency service to the communities of Shasta County and provide mutual aid to allied agencies for the common good of the citizens of Shasta County.

Shasta County Fire Department VALUES



SERVICE

- We are committed to the safety and well-being of the public and our employees.
- We are committed to our volunteer and career workforce and strive to support its training and administrative needs.
- We strive for excellence and professionalism.



COOPERATION

- We continue to improve cooperative relationships within county programs and allied agencies.
- We maintain and enhance cooperative agreements, focusing on what is best for the community.
- We continue to build a support structure that enables and encourages volunteerism.



PROTECTION

- We provide the equipment, training, and resources to our employees that enable them to serve the local communities.
- We value diversity each employee brings to the department.
- We recognize the importance of clear communication to all employees and cooperating agencies.
- We provide training and support to the workforce, which promotes a calm resilience during emergencies.





MESSAGE FROM THE CHIEF...

On behalf of the Shasta County Fire Department, it is a pleasure to share our 2022 Annual Report with the community. The purpose of this report is to provide updates to the goals and objectives previously identified in the Department's "2020 Master Plan", as well as department activities for the calendar year. We promise to be steadfast in our commitment to you in 2023. The professionals who are both volunteer and career firefighters are highly trained, hardworking, and always strive to exceed the expectations of the public.

In 2022, our organization experienced meaningful growth with the expansion of our Schedule A Program. Shasta County Board of Supervisors approved the expansion of another county full-time career paid fire engine in the Shingletown area. This coincided with the completion of the state-of-the-art fire station off Riverside Avenue near Sierra Pacific Industries. This new fire station will provide a vital response resource to the unincorporated South County Area of Shasta County, between Anderson and Redding. The station still has the potential to house other equipment for future growth of the County Fire Department.

A change from the previous two years, was the return to full engagement with our community with in-person public education and outreach programs by visiting schools and various community events throughout the year.

I am honored to work with so many dedicated, hardworking individuals and it is through their daily efforts that we can provide exceptional service to the public. Through the pages of this report, we hope you will learn more about your fire department, and the many ways we carry out our mission of providing you with exceptional service.

We are thankful for our elected official's guidance and prioritization of funds to empower your fire department, further enabling us to offer excellent emergency response and fire prevention services, while we continue to answer the call.

A handwritten signature in blue ink, appearing to read "SOH", with a long horizontal line extending to the right.

Sean O'Hara, Fire Chief

SHASTA COUNTY BOARD OF SUPERVISORS



Kevin W. Crye

District 1

Redding

Tim Garman

District 2

*Centerville, French Gulch, Igo/Ono, Keswick,
Platina, Shasta, South Redding, Verde Vale*



Mary Rickert

District 3

*Bella Vista, Big Bend, Burney, Cassel, Fall River Mills,
Hat Creek, McArthur, Montgomery Creek, Oak Run, Old Station,
Palo Cedro, Pittville, Round Mountain, Whitmore*

Patrick Henry Jones

District 4

*Castella, Crag View, Lakehead, Shasta Lake,
Mountain Gate, Jones Valley*



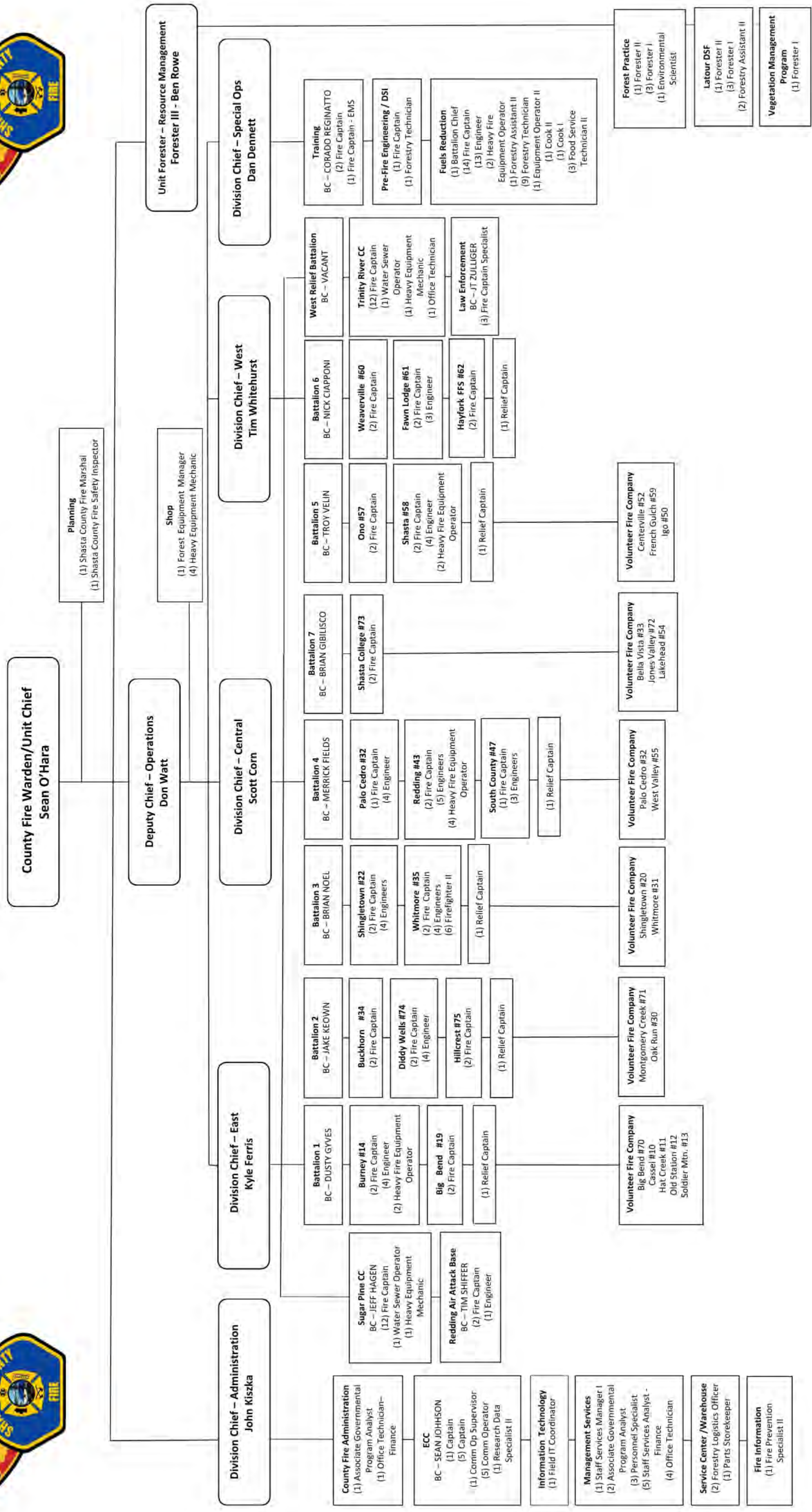
Chris Kelstrom

District 5

*Anderson, Cottonwood, Millville, Manton, Shingletown,
Viola, Happy Valley*



Shasta - Trinity Unit Shasta County Fire Department Organization





VOLUNTEER YEARS OF SERVICE



40 or more years

Richard Hathaway, Jr., Hat Creek
Russell Miller, Igo/Ono
John Parrish, Old Station

30 or more years

Linda Barneby, Oak Run
Linette Chaix, Cassel
Don Chaix, Cassel
Tom Coe, Soldier Mountain
Don Cook, Whitmore
Bill Ellis, Whitmore
Don Fennell, Montgomery Creek
David Green, Big Bend
Richard Hathaway III, Hat Creek
Kenneth Laughlin, Hat Creek
Charles Shattuck, French Gulch

25 or more years

Theresa Carroll, Montgomery Creek
Dan Hebert, Cassel
Greg Mayer, Soldier Mountain
Bernie Zornes, Cassel

20 or more years

John Allen, Oak Run
John Catrucco, Centerville
Stephen Cureton, Hat Creek
Rick Danielson, Montgomery Creek
Sy Giles, Big Bend
James Miguel, Jr., Cassel
Amanda Peri, Bella Vista
John Robbins, Soldier Mountain
Stephen Trotter, Montgomery Creek

15 or more years

Jeremiah Bidwell, West Valley
JC Cladopoulos, Montgomery Creek
Wendy Cross-Finley, French Gulch
David Painter, French Gulch
Shawn Plummer, West Valley
Daniel Pruitt, West Valley
Sara West, Whitmore
Fred Wyckoff, West Valley
Patricia Wyckoff, West Valley

10 or more years

Eve Allen, Igo/Ono
John Allen, Igo/Ono
Michael Bowling, Shingletown
Traci Clay, West Valley
Kevin Clay, Jr., West Valley
Thomas Dodson, Shingletown
Theresa Laughlin, Hat Creek
John Luntley III, Centerville
Robert Maxey, Oak Run
Joshua Patrick, Whitmore
Joe Pollard, Centerville
Penney Rodgers, Soldier Mountain

Thank you for your service!

2022 Shasta County Volunteer Fire Station Calls

Station Number & Name	Veg. Fires	Structure Fires	Other Fires	Med.	Hazmat / FMS	Public Assists / Other	ACTIVE VOL.	TOTAL DISPATCHES	TOTAL RESPONSE	RESPONSE %
10-Cassel	9	6	28	130	0	14	5	187	154	82%
11-Hat Creek	7	4	22	128	0	10	7	171	82	48%
12-Old Station	5	4	23	129	0	8	1	169	23	14%
13-Soldier Mtn.	8	5	19	69	5	9	6	115	59	51%
20-Shingletown	16	8	65	488	19	57	11	653	246	38%
30-Oak Run	14	3	10	46	1	6	4	80	71	89%
31-Whitmore	3	0	6	50	2	8	7	69	65	94%
32-Palo Cedro	21	15	62	425	5	53	9	581	256	44%
33-Bella Vista	27	11	43	560	7	52	6	700	540	77%
50-Igo	12	2	28	82	5	7	9	136	107	79%
52-Centerville	18	4	39	234	3	19	5	317	7	2%
54-Lakehead	7	2	27	157	4	19	4	216	170	79%
55-West Valley	15	7	31	155	3	34	10	245	234	96%
59-French Gulch	6	0	6	32	1	5	6	50	23	46%
70-Big Bend	5	0	4	16	1	3	6	29	23	79%
71-Montgomery Cr.	26	4	26	229	6	12	8	303	294	97%
72-Jones Valley	4	4	18	160	2	16	4	204	79	39%
TOTAL	203	79	457	3,090	64	332	108	4,225	2,433	58%

2022 CAL FIRE Shasta County Response

	Veg. Fires	Structure Fires	Other Fires	Med.	Hazmat/FMS	Law Enforce.	Others	TOTAL
Burney Station 14	60	22	131	387	9	0	40	648
Big Bend Station 19	6	0	9	9	1	1	6	32
Shingletown Station 22	62	26	193	600	24	1	79	985
Palo Cedro Station 32	82	44	135	583	8	1	70	923
Buckhorn Station 34	22	0	11	30	0	0	8	71
Whitmore Station 35	62	4	27	63	2	0	26	183
Redding Station 43	194	76	325	1,496	46	1	210	2,344
South County Station 47	1	2	1	7	0	0	4	15*
Ono Station 57	33	1	24	63	0	0	13	134
Shasta Station 58	128	33	146	476	13	0	62	857
Shasta College Station 73	117	43	191	886	13	3	92	1,345
Diddy Wells Station 74	66	11	70	166	6	7	20	346
Hillcrest Station 75	23	1	23	109	3	0	9	168
TOTAL	856	263	1,286	4,875	125	14	639	8,051

*Statistics provided for last week of December after station's initial opening.

2022 Shasta County Chief Officer & Prevention Calls

	Veg. Fires	Structure Fires	Other Fires	Med.	Hazmat/FMS	Law Enforce.	Public Assists/Other	TOTAL
B2407	18	3	14	14	2	0	3	54
B2408	3	2	8	16	0	0	2	31
B2409	9	3	6	12	0	1	10	41
B2411	30	14	42	61	1	0	11	159
B2412	27	10	38	67	2	7	7	158
B2413	55	27	83	104	2	1	6	278
B2414	38	31	75	109	2	1	4	260
B2415	34	16	32	83	2	0	5	172
B2416	38	9	40	56	1	0	5	149
B2417	35	14	31	86	0	1	6	173
B2418	46	10	24	65	3	0	9	157
B2419	40	6	35	65	2	0	17	165
B2420	81	15	56	7	3	86	11	259
P2421	90	17	75	9	1	124	3	319
P2423	96	22	74	19	3	96	15	325
TOTAL	640	199	633	773	24	317	114	2,700

Redding Emergency Command Center (ECC)

The Redding Emergency Command Center (ECC) is a secondary Public Safety Answering Point (PSAP). It is staffed 24/7 with a minimum of two personnel during the winter and three personnel during the summer months to facilitate dispatching appropriate resources to emergencies countywide. The ECC is staffed with 13 permanent employees. Overseeing the operation is one Battalion Chief, one Communications Supervisor, six Fire Captains, and five Communications Operators working alternating shifts. Collectively, these employees have the field experience, local historical knowledge, and technical expertise to take full advantage of the state-of-the-art Computer Aided Dispatch (CAD) System. These dedicated employees dispatch for 14 state fire stations, 18 SCFD Volunteer Companies, and 10 fire protection districts throughout Shasta and Trinity Counties.

Dispatch plans are tailored to the type of incident being dispatched in each area. However, information gathered from 911 callers, weather monitoring, and fire history for a given area are also used to determine the appropriate number of resources being dispatched to an incident. The ECC Captain provides input and oversight while functioning as a 24-hour Duty Officer. The Captain uses their field experience to initially command the incident prior to the first arriving field unit and is given full authority to modify a response based on the information received. The ECC is co-located with the U.S. Forest Service dispatch center for the Shasta-Trinity National Forest.



In 2022, the ECC answered a total of 52,503 telephone calls of which 20,088 were emergency calls resulting in 14,676 incidents within the unit. The ECC processed 2,602 out-of-unit requests for resources to assist with over 456 non-local emergency incidents statewide. Locally, the ECC maintained the resource ordering and status for the Peter Incident and assisted the U.S. Forest Service in the ordering of resources. Along with the local emergency dispatching needs of SHU, ECC Staff were committed for 59 days out of the area to assist other units with resource ordering for expanding incidents.

Our ECC Staff communicates daily with the Northern Region Geographic Area Coordination Center to provide staffing information, personnel availability, ground/air resources availability, and local incident resource needs.

We look forward to the challenges and successes 2023 may bring and stand ready to provide the citizens of Shasta County with the most professional services that fire service can provide.

Training

Our mission is to provide quality service to the public by developing the skills and abilities of all Shasta County Fire (SCFD) and CAL FIRE Shasta-Trinity Unit's (SHU) personnel through training. We ensure all federal, state, local and departmental training mandates, laws and regulations are followed as they pertain to training. The SCFD/SHU Training Bureau coordinates the initial and ongoing training requirements of 500+ personnel consisting of SCFD volunteers, career staff, CAL FIRE uniformed operational staff, non-uniformed support staff, California Conservation Corpsmembers, and National Guard soldiers. This is accomplished through training that is efficient, economical, and consistent with the needs of the public, Shasta County, the fire department, and it's members. On average, the Training Bureau supplies over 4,000 combined instructor hours, while the aforementioned personnel participate in over 22,000 combined hours of training each year. The previous few years have seen a diminishing number of classes and attendance, which has created a gap in the training needs of the local area, region, and nationally. As we move beyond the complications of the previous years, the requirements to deliver training has not diminished and remains a necessary component to the emergency services provided to the county, region, and state.



The Training Bureau is staffed with one Battalion Chief who oversees all aspects of the Training Bureau, one Fire Captain whose primary mission is the coordination and delivery of the training requirements for CAL FIRE unit personnel, one Fire Captain who serves as the SCFD Training Officer, one Fire Captain who functions as the SCFD/SHU EMS Coordinator, and one Office Technician to support all the programs and personnel. In the winter months, by agreement with SCFD, our staff is augmented with four additional field personnel, who are outfitted with vehicles and specialized equipment. The four Training Officer's primary mission is to deliver quality training courses and topics to the 18 Volunteer Fire Companies that make up SCFD. These trainings are predominantly delivered on weekends or in the evenings to accommodate the needs of SCFD Volunteers. Career personnel trainings are coordinated at various times throughout the year. In addition to training coordination and delivery, the Training Bureau augments the response capabilities of Shasta County. In 2022, Bureau staff responded to over 300 emergency calls for service.

The Training Bureau continues to evaluate our processes and improve the training program for both SCFD and the local unit. The Bureau continues its successful relationship with Shasta College, the Shasta-Tehama-Trinity Public Safety Training Consortium (SHIELD), and the Fire Service Training Officers of Shasta County. Through these relationships, we deliver and participate in regional training courses throughout Shasta, Tehama and Trinity Counties. The Bureau continues to be a lead agency in the development of SHIELD's facility and programs. We look forward to the upcoming year and continued improvement to all our programs.

Fire Prevention & Law Enforcement

Three full-time law enforcement officers are assigned to the Prevention Bureau and conduct fire investigations, as well as enforce forest and fire laws. While these officers have primary duties, each are responsible for responding to incidents requiring a law enforcement officer/investigator response. Officers are involved in many fire investigations throughout the year and will regularly assist other law enforcement agencies. Five other peace officers work within fire or Resource Management positions and may assist with larger more complex investigation or enforcement, when needed. In 2022, the Fire Prevention Bureau responded to or were engaged on 903 incidents, issued 82 citations, and 36 in-custody arrests were made (15 of these were arson).



B2420 - Fire Prevention Bureau Battalion Chief, J.T. Zulliger

The Prevention Bureau Chief is a state-funded position occupied by Battalion Chief J.T. Zulliger. Chief Zulliger has served as the Prevention Bureau Chief since July 2016. He is responsible for oversight of law enforcement, investigations, and civil cost recovery for CAL FIRE/SCFD.

P2421 - Fire Captain Specialist/Peace Officer

The Fire Captain Specialist is a state-funded position. This position is responsible for general law enforcement duties. They also complete railroad and powerline safety inspections. In addition, he reviews and analyzes fire ignitions to identify fire problem areas.

P2423 - Fire Captain Specialist/Peace Officer

This position is funded by Shasta County and is responsible for structure fire investigation, in addition to other fire investigation and law enforcement duties. Furthermore, they also function as a lead for tactics and firearms training for SHU's law enforcement.

Office Technician

This state-funded position provides clerical support for the CAL FIRE/SCFD law enforcement office and the County Fire Marshal's Office. Duties include documentation, records retention, database management, correspondence, public records requests, and special projects.

Fire Marshal & Protection Planning

COUNTY FIRE MARSHAL - JEFF POWELL, P2425

Jeff Powell was appointed Shasta County Fire Marshal in 2022. He has served in the fire service for 18 years. Fire Marshal Powell enforces the County's Fire Safety Standards and California Fire Code under the oversight of the County Fire Warden/CAL FIRE Unit Chief. The Fire Marshal's Office works in cooperation with the Shasta County Planning and Building Divisions by ensuring fire code compliant commercial and residential developments. The Fire Marshal represents the fire department at Planning Commission and Resource Agency meetings. Jeff also serves as an arson investigator assisting the Shasta County Fire Prevention Department and Arson Task Force with origin and cause determinations on suspicious fires and newsworthy events. Jeff is an ICC Certified Fire Marshal and Combination Fire Inspector who gained his experience with the Santa Rosa Fire Prevention Bureau. Jeff has several years experience coordinating with all applicable agencies regarding inspections of multi-million dollar commercial and residential developments.

COUNTY FIRE SAFETY INSPECTOR - SCOTT ROSS, P2426

Scott Ross has served as the Shasta County Fire Safety Inspector since September of 2016. The County Fire Inspector is responsible for plan review on-site inspections for driveway standards, setback exception requests, commercial and residential fire sprinklers, and annual life safety fire inspections of businesses in Shasta County. The Fire Inspector also performs fire alarm and hydrant test inspections. Scott also performs public information field work during large campaign fires.

In September of 2018, State Senate Bill 1205 was passed requiring all State mandated inspections be completed annually and reported to the Board of Supervisors. These inspections include schools, hotels, motels, lodging houses, and apartment houses. In 2022, Shasta County Fire Department complied with Senate Bill 1205 completing all State mandated inspections. In addition to State mandated inspections, the Shasta County Fire Marshal's Office completed upwards of 480 jobsite fire inspections of new and existing commercial, residential, industrial developments and infrastructure improvements in 2022.

Through pre-development plan review, field inspections and code enforcement action, the Shasta County Fire Marshal's Office is also tasked with ensuring the following:

- Ensuring safe and effective Emergency Vehicle Access Roads in compliance with County Fire Safe Standards to ensure safe access for emergency fire equipment as well as civilian evacuation and unobstructed traffic circulation.
- Ensuring that new and existing fire mains and hydrant systems throughout the county remain reliably operational and continue to deliver required volume and pressure of fire water supplies.
- Ensuring that all new and existing fire sprinkler systems and other fire protection systems are installed and perform to minimum standards. Perform annual inspections of all existing fire protection systems to ensure such systems are always maintained and remain in service throughout the life of the systems.
- Ensuring fuel loading reductions, vegetation removal and defensible space including building setback and strategic locations of green belts in compliance with Shasta County Fire Safe Standards.



Fire Inspector's Activity	2021	2022	Fire Marshal's Activity	2021	2022
Inspections	165	100	Parcel Maps	7	*3
Violations	18	12	Property Line Adjustments	32	*1
Re-Inspections	16	12	Use Permits	5	*0
Exception Requests	68	52	Zoning Amendments	3	*2
Fire Sprinkler Acceptance Test	210	231	Other / Misc.	6	*3
Commercial Hood Acceptance Test	0	1	Plan Reviews	707	712
Administrative Permits	65	*8	Minor Modification	8	*0
School Inspections	21	21	Short Term Rental	65	67
Hotel / Motel Inspections	14	14	Certificate of Compliance	10	*0

**Denotes number of projects from 11/1/22-12/31/22, due to new Fire Marshal hire.*

Fleet Services

Darren Oylear was promoted to Forestry Equipment Manager (FEM I) for both the CAL FIRE and Shasta County Fire Department Fleets in July of 2022. He managed the fleets for Valley View Camp and most recently, Trinity River Camp. The Shasta-Trinity Unit Shop staff seek to reinforce our commitment to the state and county's repair and maintenance needs. The SCFD program provides for two Heavy Equipment Mechanics (HEM) that services and maintain SCFD equipment in the field, at the stations, and at their shop located at Headquarters. Due to a promotion of one of the HEM's, there is currently a vacancy, leaving the program short staffed. The county fleet is comprised of 106 fire engines, water tenders, rescues and boats. The Unit FEM I also oversees the CAL FIRE fleet which includes approximately 150 pieces of fire equipment.

The County Fleet maintenance budget is roughly \$165,000 with an additional \$20,000 in "Measure B" funding. The Department continues to be challenged by inflation, replacement part and supply chain issues, but remain committed to maintaining a reliable fleet. The Apparatus Replacement Schedule is based on years of services and miles driven, but has been complicated by the aforementioned factors. To maintain a 20 year replacement schedule on fire apparatus, the Department would need to purchase a new fire engine each year.

The current "Measure B" funding does not fulfill this need. The Department has been very aggressive in renting out fire apparatus during fire season to CAL FIRE during wildland fire emergencies. The equipment rental reimbursements help augment the replacement cost. In 2022, the Department purchased a Type I and Type III engine, which should be delivered by the end of 2023 and 2024, respectively.



Management Services

Shasta County Fire Department and CAL FIRE Management Services staff members provide a wide variety of services to Shasta County volunteer and CAL FIRE firefighters. Management Services staff is committed to providing outstanding customer service and positive experiences to all SCFD volunteers, CAL FIRE firefighters and staff, the public, and cooperating agencies.

Staff in these sections are managed by John Kiszka, Assistant Chief of Administration and Cindy Craddock, Staff Service Manager I (SSM I). Staff positions in Management Services include Associate Governmental Program Analysts (AGPA), Staff Services Analysts (SSA), Personnel Specialists (PS), and Office Technicians (OTs).

Julia Hayen, AGPA, SCFD Finance

Sarah Sanders, AGPA, CALFIRE Finance

Julia's responsibilities include development and management of the SCFD budget as well as grant-funded expenditures and reimbursements. These activities often require written reports to the Board of Supervisors. Julia also creates and processes all payments to volunteer firefighters, including training, call stipends, reimbursement of fire pay, annual reviews for their attendance, and calculates service credits. Julia is also responsible for the creation of vendor contracts for services to the SCFD facilities.

Sarah's responsibilities include managing the Shasta-Trinity Unit's budget and various allocations, reconciliations of expenditures, and audits financial documents that are processed using state funding. Sarah also acts as the Unit's CalCard coordinator, handles the banking, and is the Fi\$CAL lead. Sarah handles the contracts in the Unit.

Kimberly Pennington, Executive Office Technician and Trinity River Camp, CALFIRE

Rebecca Thompson, Office Technician, SCFD

Shelby Bullard, Office Technician, Front Desk, SCFD

Kimberly is the Executive Team's Office Technician managing schedules, arranging meetings, and ensuring the subject matter is properly documented with agendas and meeting minutes. She performs a large volume of data entry and special projects. Kimberly works part-time to assist the Trinity River Conservation Camp with administrative duties such as purchasing and FC-77 packages.

Rebecca processes all new volunteer firefighters for SCFD. This process includes scheduling pre-employment physicals, completion of DOJ/FBI background checks, and testing for the use of self-contained breathing apparatus. She works cooperatively with Shasta County Risk Management on injury reporting and the addition of new volunteer firefighters. Rebecca processes all accounts payable for the SCFD volunteer stations. She works with CAL FIRE and SCFD staff to coordinate the annual SCFD Volunteer Appreciation Dinner.

As the Front Desk Office Technician, Shelby is the first contact when members of the public enter the doors at SCFD and CALFIRE. This position is responsible for assisting the public with questions, fielding all incoming calls to the Unit, properly assessing the caller's request, and issuing burn permits. This position also processes the monthly SCFD County Activity Reports.

AGPA – Hiring, CALFIRE

The AGPA – Hiring position is responsible for managing the hiring program in the Unit. This position manages the Unit's position control, facilitates the hiring of Unit positions and ensures proper hiring practices are implemented throughout the program. Additionally, this position is responsible for ensuring proper staffing levels are met at all SCFD Schedule A facilities year-round and CALFIRE stations, camps, and bases.

Susan Chism, SSA, CALFIRE Finance

Sierra Falkenstein, SSA, CALFIRE Finance

Barbara Reynolds, SSA, CALFIRE Finance

Susan, Sierra, and Barbara process the documents generated by field staff for purchases within the Unit. Analysts work extensively in the State's financial system, Fi\$CAL, ensure their assigned stations are working within their budgetary guidelines, and reconcile their station's monthly CalCard statements.

Amanda Bline, Personnel Specialist, CALFIRE

Thanh Kincannon, Personnel Specialist, CALFIRE

Tabitha Mallery, Personnel Specialist, CALFIRE

Amanda, Thanh, and Tabitha are all responsible for processing personnel documents related to pay, hiring, benefits and other personnel transactions. Each Personnel Specialist is assigned a portion of the alphabet and are responsible for full-service personnel transactions. They also serve as the assigned Return to Work Coordinator and works with Region staff for employees injured while on duty. Personnel Specialists also facilitate seasonal hiring and layoffs, in coordination with the Hiring AGPA.

Service Center

Caitlin Borges, Forestry Logistics Officer, CAL FIRE

April Howell, Forestry Logistics Officer, CAL FIRE

Both April and Caitlin perform as one of the Unit's key supporting functions; they help with many operational needs in the Shasta-Trinity Unit and SCFD. They both are responsible for understanding many policies, procedures, and regulations as they relate to purchasing through various contracts and vendors. They serve as the property manager for all excess state and federal equipment and are responsible for its tracking. April and Caitlin are the keepers of all personal protective equipment (PPE) for CAL FIRE, which includes purchase, distribution, and tracking for approximately 360 Shasta-Trinity Unit employees.

Along with purchasing and distributing CAL FIRE PPE, they make many of the purchases to support fire emergencies within the county. In addition to local firefighting support, they are also responsible for supporting resources that are surged into the area during extended incidents often quadrupling their workload. They work with the SCFD parts storekeeper to ensure that all volunteer firefighters and CAL FIRE employees have the required equipment and supplies.

Allen Carroll / Jaime Crane, Parts Storekeeper, SCFD

The Parts Storekeeper has the daunting task of ensuring that all 108-plus SCFD volunteer firefighters are properly outfitted with personal protective equipment (PPE). These articles include structural turnouts, wildland Nomex, hydration packs, and other miscellaneous gear needed by volunteer firefighters. This position is responsible for purchasing all SCFD's PPE, supplies, and the tracking and inventory of all items issued to the volunteer firefighters. It also delivers necessary supplies to volunteer stations and plays a key role in supporting fires within the SCFD response area. Finally, the position supports all functions of the CAL FIRE side of the Service Center in collaboration with the state Forestry Logistics Officer. Allen retired earlier this year and Jaime Crane was hired as the new Parts Storekeeper.



Battalion I

Battalion I is under the direct supervision of Battalion Chief Dusty Gyves. Battalion I is comprised of five Shasta County Volunteer Fire Companies and two CAL FIRE stations:

- Volunteer Company 10 - Cassel
- Volunteer Company 11 - Hat Creek
- Volunteer Company 12 - Old Station
- Volunteer Company 13 - Soldier Mountain
- Volunteer Company 70 - Big Bend
- CAL FIRE Burney Station 14
- CAL FIRE Big Bend Station 19

The battalion serves a population of approximately 4,800 residents and covers an area of 336,412 acres. Each of the SCFD Battalion I Volunteer Fire Companies have Type II Engines, Type III Engines, water tenders, and rescues. The SCFD has the jurisdictional responsibility for fire protection in the communities of Big Bend, Cassel, Hat Creek, Old Station, Pondosa, Dana, and Soldier Mountain, Lake Britton, and Burney Falls State Park.

Recruitment and retention of volunteers remains difficult in Battalion I and the number of volunteers at each of the companies continues to decline. The Volunteer Firefighters from Company 10, 11 and 12 continue to join forces in an effort to increase the level of service to their communities. Each company has committed to be dispatched to all calls in the neighboring response areas. All of the companies have either an auxiliary or Inc. Board to support the companies financially and within the community.

CAL FIRE Station 14 (Burney) has remained fully staffed throughout the entire 2022 year due to additional State funding. This has provided additional service to the citizens of Shasta County in the Burney, Big Bend, Cassel, Hat Creek, Montgomery Creek, Old Station and Soldier Mountain areas. Station 14 staff worked on the Burney Community Fuel Break, Phase II & III as well as the Johnson Park Community Fuel Break. The CAL FIRE engine is staffed for 24 hours a day with a minimum of three personnel (one company officer and two firefighters).



SCFD Company 10 - Cassel

Company 10 is served by six volunteer firefighters, led by Volunteer Chief Don Chaix. Company 10 is the primary fire company for Cassel, Lake Britton, and Burney Falls State Park. The Company serves a population of 207 permanent and seasonal residents. The area is a popular outdoor recreation area for hunting, fishing, camping, and boating. The Company's primary response area includes three Pacific Gas & Electric (PG&E) powerhouses along Hat Creek and the Pit River and the Lake Britton (Pit 3) Dam. There are two state highways (Highway 299E and Highway 89), the Pacific Crest Trail, Burney Falls State Park, several public and private campgrounds, two large construction companies, two large PG&E natural gas transmission lines, and multiple main electrical transmission lines. The communities served by Company 10 have two fire safe councils; Burney Fire Safe Council (Lake Britton) and the Hat Creek Valley Fire Safe Council (Cassel proper). The fire safe councils have identified four separate evacuation collection points that lie within Company 10's primary response area. The pre-identified collection points are the Cassel Volunteer Fire Station, Mountain Christian Academy, Hat Creek Construction, and Burney Falls State Park. In 2022, Company 10 was dispatched to 187 calls for service.

Battalion I (cont.)

SCFD Company 11 - Hat Creek

Company 11 is served by seven volunteer firefighters led by Volunteer Chief Richard Hathaway III. Company 11 serves a community of 500 permanent and seasonal resident. The area is a popular outdoor recreation area for hunting, fishing, camping and hang gliding. State Highway 89 and Hat Creek run north and south through its entire response area. Company 11 also responds to the communities of Cassel, to the north, and Old Station to the south. The Company's jurisdiction falls entirely within the Hat Creek District of the Lassen National Forest. Within Company 11's response area is a popular north state hang gliding launch area on the Hat Creek Rim, several public and private campgrounds, and the Hat Creek Radio Observatory; a space research facility operated as a partnership between the University of California, Berkeley, and the Search for Extraterrestrial Intelligence Institute (SETI). The Hat Creek Valley Fire Safe Council serves the entire populated area within Company 11's response area and has identified Company 11 as one of its evacuation collection points. Company 11 volunteers continue their local firefighter training program for area teens. The program provides teens with future job training and promotes interest in becoming a volunteer firefighter. In 2022, Company 11 was dispatched to 171 calls for service.

SCFD Company 12 - Old Station

Company 12 is served by one volunteer firefighter, Volunteer Chief John Parrish. John Parrish has been with the Old Station Volunteer Company for over 40 years. The Company serves a community of 51 full-time residents, with another approximately 2,000 summer residents. The area is a popular outdoor recreation area for hunting, fishing, camping, and sledding. State Highways 89 and 44 run through the response area. Company 12's response area falls entirely within the Hat Creek District of the Lassen National Forest and borders the Lassen Volcanic National Park. Within the Company's response area are two fishing resorts, three public campgrounds, a gas station/market, and a restaurant. The Hat Creek Valley Fire Safe Council serves the entire populated area within the response area and identified Company 12 as one of it's evacuation collection points. Every Spring, they host the annual Fisherman's Breakfast on the opening Saturday of the California Trout Season Opener. This event draws large amounts of people from all over Northern California. In 2022, Company 12 was dispatched to 169 calls for service.

SCFD Company 13 - Soldier Mountain

Company 13 served by five volunteer firefighters led by Volunteer Chief, Greg Mayer. Company 13 serves the communities of Pondosa, Dana and Soldier Mountain, with a seasonal and permanent resident population of approximately 120 people. The Company's primary response area is a combination of remote timberland, wetlands, ranch, and agricultural land. State highway 89 runs through the west portion of the response area. There is a large wild rice processing facility, two large PG&E natural gas pipelines, several large power transmission lines and fishing resorts in the response area. In 2022, Company 13 was dispatched to 115 calls for service.

SCFD Company 70 - Big Bend

Company 70 is served by six volunteer firefighters led by Acting Volunteer Chief, Geoff Unangst. Company 70 serves a community of 150 permanent and seasonal residents. The area is a popular outdoor recreation area for hunting, fishing, and camping. The community of Big Bend is a remote area of Shasta County and is 18 miles from the closest fire company located in Montgomery Creek. The Pit River runs through the entire response area and there are several small reservoirs along the Pit and McCloud River. The response area also includes three PG&E powerhouses, two PG&E dams, several PG&E main electrical power lines, Iron Canyon Reservoir, several private campgrounds, a market/gas station, and a large school. In 2022, Company 70 was dispatched to 29 calls for service.

Battalion II

The Battalion is under the direct supervision of Battalion Chief Jake Keown. Battalion II is comprised of two Volunteer Fire Companies and three CAL FIRE stations:

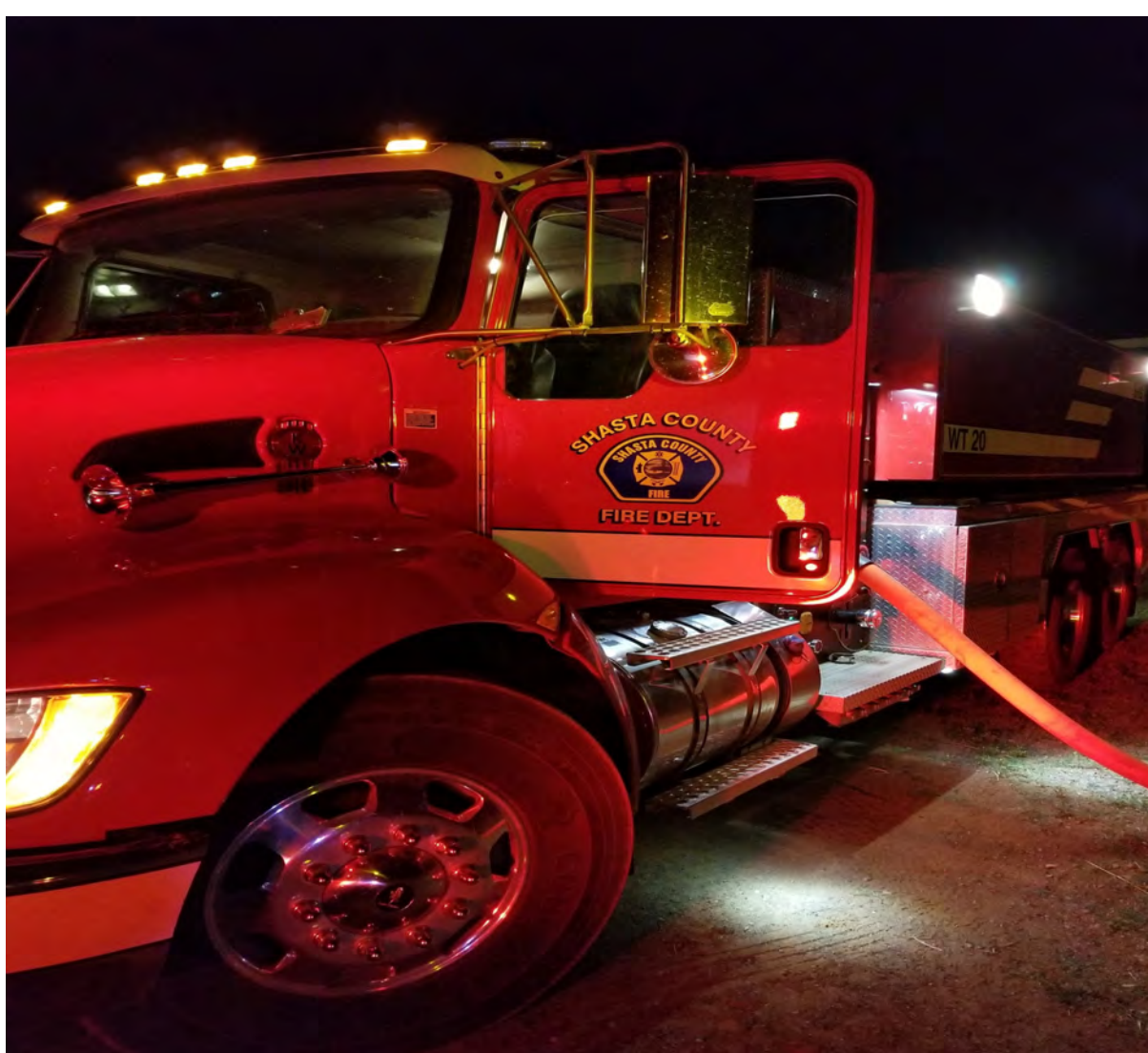
- Volunteer Fire Company 30 - Oak Run
- Volunteer Fire Company 71 - Montgomery Creek
- CAL FIRE Buckhorn Station 34
- CAL FIRE Diddy Wells Station 74
- CAL FIRE Hillcrest Station 75

During CAL FIRE's peak staffing period, Hillcrest and Buckhorn stations are staffed with one Type III fire engine each. Diddy Wells is staffed with two Type III fire engines during peak fire season, and one during non-peak fire season with two personnel under an Amador contract with Shasta County. Each Volunteer Fire Company in Battalion II houses a Type II structure fire engine, a Type III wildland fire engine, rescue unit, and water tender. These companies are actively involved in recruitment, training, emergency response, facility and equipment maintenance, and various fundraising activities. The communities located within the battalion pose a variety of emergency response challenges to fire personnel including: industrial and commercial structure, large power distribution facilities, and a variety of dynamic fuel and topography types.

In 2022, Battalion II continued to work on vegetation management projects to increase the safety of Shasta County residents. Fuels reduction work along Buzzard Roost Road has begun and will continue into 2023. Fuels reduction along Backbone Road has been approved and work began in 2022 and will continue into 2023. Battalion II continues to work with local landowners to treat suitable areas with prescribed fire for large scale treatments. In 2022, we treated approximately 180 acres. The reduction of vegetation allows for safer ingress of emergency resources and evacuation of residents during a wildfire incident, provides for additional grazing land for wild and domestic animals. A wildfire burns less intense in areas that have had fuels treatments, allowing for greater probability of success during suppression efforts.

SCFD Company 30 - Oak Run

Company 30 is led by Volunteer Chief, Linda Barneby and there are currently 4 active members. Company 30 was dispatched to 80 calls for service in 2022 and protects the communities of Oak Run, Mill Creek Estates, and Whitmore. The area population is approximately 800 persons within 100 square miles. Company 30 seeks to continue improving the facility, to increase function and fundraising abilities for the future.



SCFD Company 71 - Montgomery Creek

Company 71 is comprised to two stations and led by Volunteer Chief, Theresa Carroll. Station 71 is located on Highway 299 in the community of Round Mountain and houses a rescue and structure engine. Station 271 is on Hillcrest Drive in Montgomery Creek and houses a wildland engine and water tender. Company 71 was dispatched to 303 incidents in 2022. In addition, 2,844 hours were spent on trainings, station/vehicle maintenance, administration, responses, and fundraising. At times, they may respond with Company 70 (Big Bend), Company 30 (Oak Run), Company 33 (Bella Vista), CAL FIRE Hillcrest (Station 75), CAL FIRE Diddy Wells (Station 74), CAL FIRE Big Bend (Station 19), CAL FIRE Shasta College (Station 73), CAL FIRE Burney (Station 14), and Burney Fire District.

Battalion III

The Battalion is under the direct supervision of Battalion Chief, Brian Noel. Battalion III consists of two Volunteer Fire Companies and one CAL FIRE station and one CAL FIRE/SCFD station:

- Volunteer Fire Company 20 - Shingletown
- Volunteer Fire Company 31 - Whitmore
- CAL FIRE Shingletown Station 22 / SCFD Engine 22
- CAL FIRE Whitmore Station 35

Located in southeastern Shasta County, Battalion III encompasses the communities and surrounding areas of Millville, Shingletown, Whitmore, Viola, and Manton. Millville Fire Protection District (MFPD) also provides protection in and around the community of Millville. Shasta County Fire Department is a cooperator with area fire agencies, having automatic aid fire protection agreements with both Millville FPD and Tehama County Fire (Manton Volunteer Fire Company) to provide protection to the citizens of Shasta County based on the closest resource concept.



SCFD Company 20 - Shingletown

Company 20 is led by Volunteer Chief, Thomas Dodson and includes three stations. The stations are located in Shasta Forest Village, the Starlite Pines Subdivision and the intersection of Alward Way and Highway 44. In 2022, Company 20 was dispatched to a total of 653 incidents. There are currently nine volunteer firefighters. Resources utilized to respond to these incidents include two structure fire engines, one wildland fire engine, one 3,000 gallon water tender, and three rescues. One of the rescues is fully equipped with extrication rescue tools.

Critical infrastructure within and around the community includes PG&E natural gas lines, PG&E and WAPA high-voltage transmission lines, Volta Powerhouse, a medical clinic, Black Butte Elementary and Middle School, church and private camp/recreational facilities, public camping and recreational sites, and commercial timberland. Commercial businesses located in Shingletown include: grocery stores, retail stores, restaurants, a small business park and other small businesses; totaling approximately 145,000 square feet. Roughly 1,900 residential structures are in and around Shingletown, including approximately 250 summer homes/cabins. The resident population is nearly 5,000.

SCFD Company 31 - Whitmore

Company 31 utilizes one station in Whitmore and is led by Volunteer Chief, Bill Ellis. The Volunteer Company was dispatched to a total of 69 incidents in 2022. There are currently 7 volunteer firefighters. Resources utilized to respond to these incidents include one structure fire engine, one wildland fire engine, two 2,000 gallon water tenders, and one rescue.

Critical infrastructure within and around the community include PG&E natural gas lines, PG&E and WAPA high-voltage transmission lines, Kilarc Powerhouse, Whitmore Elementary School, Whitmore Community Center, a private church camp/school, public recreational sites, and commercial timberland. Additional commercial businesses located in Whitmore include a general store, post office, and a private winery and antique store, totaling approximately 20,000 square feet. Almost 350 residential structure are in Whitmore including 20 summer homes/cabins. The resident population is approximately 700 people.

Battalion III (cont.)

CAL FIRE / SCFD Station 22 - Shingletown

CAL FIRE/SCFD Shingletown Station 22 is located on Highway 44 just East of the town of Shingletown and effective July 1st, 2022 was staffed with one SCFD Type II structure fire engine under contract with CAL FIRE staff with a minimum of three personnel daily. One Type III CAL FIRE wildland fire engine is staffed with a minimum of three personnel during fire season. While the primary mission emphasizes the management and protection of California's natural resources from wildland fires, or any other emergency within SCFD's jurisdiction. During non-wildfire season the station is reduced to one SCFD Type II structure fire engine. In 2022, Station 22 responded to 753 incidents.

CAL FIRE Station 35 - Whitmore

This is the third year that CAL FIRE Station 35 has been open all year, providing additional services to the citizens of Shasta County in Whitmore, Oak Run, and Shingletown communities. Station staff worked on the Ponderosa Way Fuel Break, LaTour Demonstration State Forest, as well as other Vegetation Management Burns throughout the Shasta-Trinity Unit. The CAL FIRE engine is staffed for 24 hours a day with a minimum of three personnel (one company officer and two Firefighter II's). The Whitmore Firefighter I Crew was staffed again this past year at Station 35 from May until layoffs in early December. The crew consisted of three Fire Captains, two Engineers and forty Firefighter I's. The crew responded to wildland fires not only in Shasta County, but all over Northern California this past fire season. They worked on numerous fuel reduction projects throughout the county. This crew has been budgeted to be permanently funded for the foreseeable future and is a welcomed addition to our battalion.



Battalion IV

Battalion IV is under the direct supervision of Battalion Chief Merrick Fields. It consists of two volunteer fire companies, two Shasta County Fire Department (SCFD) stations, and one CAL FIRE station.

- Volunteer/Career Company 32 - Palo Cedro
- Volunteer Company 55 - West Valley
- CAL FIRE Station 43 - Redding
- SCFD Station 47 - South County

Battalion IV is located on the valley floor along Interstate 5 and the Sacramento River corridor running north and south between the borders of Tehama County and the northern Redding city limits. The battalion has two incorporated cities which include the City of Anderson and the City of Redding. There are also two unincorporated communities within the battalion which are served by independent fire districts that include Happy Valley and Cottonwood, which have agreements with Shasta County for response. Running throughout the central portion of the battalion is the Sacramento River which brings an influx of visitors for seasonal activities. Numerous schools are located throughout the area, including Pacheco Elementary School, West Valley High School, and Foothill High School.

Located in the center of the battalion, running north and south, is the Union Pacific Railroad (UPRR). The railroad hauls a diversified mix of agricultural products, automobiles, chemicals, coal, industrial products and intermodal freight moving among the 23 western states. Industrial properties within SCFD's South County protection area include two active lumber mills, Sierra Pacific Industries and Siskiyou Forest Products, and three large bulk propane facilities that include Amerigas, Campora, and Blue Star Gas. The west side of the battalion include PG&E's gas pipeline which delivers natural gas to REU's co-generation plant through large underground pipes located underneath the UPRR tracks along Highway 273 and Clear Creek Road. There are many mixed commercial developments along Highway 273, including Win River Casino. A complex network of large high voltage transmission lines traverses the battalion, delivering the main supply of power to cities such as Eureka and Fortuna.

Battalion IV is comprised of an integrated, multi-agency workforce of state and local firefighting resources that provide fire protection through various types of Automatic Aid, Mutual Aid and other cooperative fire agreements. Through these various types of agreements, the SCFD is committed to meeting its objective of fostering relationships with its local and federal agency cooperators and stakeholders to share resources as a cost-effective approach to providing services as outlined in the 2020 Master Plan. One of those goals has been met with the completion of the South County Fire Station 47. With the opening of the station response times have been reduced and there is an increase safety response.



SCFD Company 55 - West Valley

The West Valley Volunteer Fire Company is led by Volunteer Fire Chief, Shawn Plummer. While West Valley is considered a part of the Cottonwood community for census purposes, it is estimated that approximately 750 residents are served by the West Valley Volunteer Fire Company. The area boasts a mix of mainly residential and agricultural uses with small commercial facilities and the West Valley High School. The Company operates one structure fire engine, one wildland fire engine, one fire rescue, and a water tender. In 2022, Company 55 was dispatched to 245 incidents.

Battalion IV (cont.)

SCFD / CAL FIRE Station 32 - Palo Cedro (career & volunteer staffed)

Schedule A, Engine 32 is staffed with a minimum of two career personnel and is co-located with Volunteer Fire Company 32. The career staff operate and maintain the county's Self Contained Breathing Apparatus (SCBA) Program. The personnel are trained in every aspect of repair, service, maintenance, and Cal-OSHA requirements under Title 8 and the National Fire Protection Association (NFPA). The SCBA Program is highly involved and is the primary function of the Schedule A staff at Station 32. The community of Palo Cedro has a population of approximately 1,151 people based on the 2020 census. Palo Cedro is primarily comprised of residential, agricultural, commercial, and highway uses. Within the core of the community located near Deschutes Road and State Highway 44 is a mix of commercial properties including retail centers and schools. The community has seen additional growth in 2022 of both residential and large commercial buildings. Company 32 operates one wildland fire engine, one fire rescue, a water tender, and a breathing support unit. In 2022, Volunteer Company 32 was dispatched to 581 incidents.

CAL FIRE Station 43 - Redding

CAL FIRE Redding Fire Station 43 is located on Airport Road in Redding and is served by two Type III wildland fire engines, staffed with a minimum of three personnel during the peak fire season months of June 1st through October 31st. While CAL FIRE's primary mission emphasizes the management and protection of California's natural resources from wildland fires, these two engines can be dispatched to the scene of an auto accident, structure fire, or any emergency within SCFD's jurisdiction. During the off-season period of November 1st through May 31st, staffing at Station 43 is reduced to one Type III wildland fire engine staffed with a minimum of 2 personnel under contract with the SCFD. CAL FIRE/SCFD has a year round Mutual Threat Zone Agreement (MTZ) with the City of Redding Fire Department for structure fires, wildland fire, and traffic accidents. This Agreement provides decreased response times for both departments for incidents in the area covered by the MTZ.

SCFD Station 47 - South County

Schedule A South County Station 47 is located on Riverside Drive in Anderson and is served by a Type II structure fire engine, one wildland engine, and a water tender. The Type II engine is under contract with CAL FIRE and staffed with a minimum of two personnel. Construction Station 47 was completed and opened in the Winter of 2022/2023. With the opening of Station 47 response times were reduced in Southern Shasta County. The response area consists of the unincorporated area between Redding and Anderson along Interstate 5 and Highway 273. Additionally, it extends south of the City of Anderson to the county line (excluding the Cottonwood Fire Protection District). The area is comprised of a wide range of uses from residential to commercial and industrial facilities, along with agricultural, railroad and highway uses. SCFD has an Automatic Aid Agreement with the Anderson Fire Protection District allowing both Departments to respond to auto accidents, structure fires and wildland fires.



Battalion V

The Battalion is under the direct supervision of Battalion Chief Troy Velin. Battalion 5 consists of three volunteer fire companies, and two CAL FIRE stations (one Amador):

- Shasta County Volunteer Fire Company 50 – Igo/Ono
- Shasta County Volunteer Fire Company 52 – Centerville
- Shasta County Volunteer Fire Company 59 – French Gulch
- CAL FIRE Ono Station 57
- CAL FIRE Shasta Station 58

Battalion 5 is comprised of the communities of Centerville, Igo/Ono, Keswick, French Gulch, and Platina. The Battalion lies at the foot of the California Coast Range with elevations ranging from 500 to 6919 feet. The Whiskeytown National Recreation Area and the Shasta Fire Protection District are within the Battalion. The Battalion is comprised of oak woodland, chaparral, and timberland with residential subdivisions located within the wildland. All the communities within Battalion 5 have the potential for a catastrophic Wildland Urban Interface (WUI) fire due to population density and fuel loading. These communities are served by four volunteer fire companies and two CAL FIRE stations.

Critical infrastructure within the Battalion includes Shasta Dam and Powerhouse, Keswick Dam and Powerhouse, Carr Creek Powerhouse, Spring Creek Powerhouse, and the associated power lines that carry the electricity from these facilities to the rest of the state. State Highways 299 and 36 traverse the Battalion carrying thousands of travelers and hazardous materials to and from the north coast of California each year.

The numerous hiking and biking trails in Centerville, Keswick, and Whiskeytown have increased over the years and the number of remote area rescues on these trails has increased as well. This presents a unique rescue task that frequently involves the Shasta County Fire Department, the Shasta County Sheriff's Department, the California Highway Patrol helicopter, and the National Park Service personnel at Whiskeytown. Summertime recreation at the Sacramento River and Clear Creek present water rescue hazards within the Battalion.

Public school campuses located in Platina, Igo, Centerville and French Gulch as well as the Keller Lumber Company in Keswick are examples of the significant fire and rescue risk located within the Battalion.

Shasta County Volunteer Fire Company 50 - Igo/Ono

The Igo/Ono Volunteer Fire Company currently has a roster of 9 volunteer firefighters and is led by Volunteer Chief John Allen. The community contains over 600 residents and is comprised of mainly rural residences, ranches, and wildland. The City of Redding and the County of Shasta operate a land-fill east of Igo, and the Northern California Veterans Cemetery is located south of town. The fire company has a fire station in Igo and a satellite station in Ono. The fire company operates two municipal fire engines, one wildland fire engine, one water tender, and one rescue vehicle. In 2022, 136 incidents were dispatched within the communities of Igo and Ono.

Shasta County Volunteer Fire Company 52 - Centerville

The Centerville Volunteer Fire Company currently has a roster of 22 volunteer firefighters and is led by Volunteer Chief John Luntey. The community is comprised of mainly residential subdivisions and rural residences. The community has numerous houses of worship, a feed store, mini-storage, and the Grant elementary/middle school campus that are examples of the target hazards in Station 52's response area. The fire company operates one municipal fire engine, one wildland fire engine, and one rescue vehicle. In 2022, there were 317 incidents dispatched within the community of Centerville.

CAL FIRE Ono Station 57

CAL FIRE Station 57, located in the community of Ono, is a seasonal fire station open only during the summer and fall. One CAL FIRE wildland fire engine operates out of the facility.

Battalion V (cont.)

CAL FIRE Shasta Station 58

CAL FIRE Station 58 provides additional protection to SCFD jurisdiction west of Redding during the winter months. An engine is staffed at Station 58, 24 hours a day, with a minimum of 2 personnel. An SCFD breathing support trailer unit is housed out of the facility and is staffed as incidents dictate. During fire season, CAL FIRE staffs two wildland fire engines and one bulldozer at the station.

Shasta County Volunteer Fire Company 59 - French Gulch

The French Gulch Volunteer Fire Company currently has a roster of 7 volunteer firefighters and is led by Volunteer Chief Cliff Shattuck. The community contains over 300 residents, and it is comprised of mainly of rural residences and historical commercial businesses. The French Gulch Hotel, built in 1885, is a historic business built in the gold mining era. The Carr Creek Powerhouse is in Station 59's response area. The fire company operates one municipal fire engine, one wildland fire engine, and one rescue vehicle. In 2022, there were 50 incidents within the community of French Gulch.



Battalion VII

Battalion 7 is under the direct supervision of Battalion Chief, Brian Gibilisco and consists of three SCFD Volunteer Fire Companies and one CAL FIRE station:

- Volunteer Company 33 - Bella Vista
- Volunteer Company 54 - Lakehead
- Volunteer Company 72 - Jones Valley
- CAL FIRE Shasta College, Station 73

Each Volunteer fire company in Battalion 7 has a Type II structure fire engine, Type III wildland fire engine, rescue unit, and water tender. The fire companies are actively involved in training, recruitment, emergency response, facility and equipment maintenance and fundraising activities. The Battalion starts in the valley, starting at the north side of Redding, extending north to the Siskiyou County line. The entire shoreline of Shasta Lake lies within the Battalion. The area north of Shasta Lake lies within the Federal Direct Protection Area and is administered by the United States Forest Service (USFS), Shasta Trinity National Forest for wildland fires. The USFS has statutory responsibility for wildland fires, but Shasta County Fire Department is responsible for all medical aids, traffic collisions, hazardous conditions, and fires involving structures, vehicles, boats, and other improvements. The Battalion also includes one incorporated city, City of Shasta Lake, and one fire district, Mountain Gate Fire Protection District. Shasta County Fire Department has mutual aid agreements with the City of Shasta Lake and Mountain Gate Fire Protection District. This includes responses to structure fire, both residential and commercial, and vehicle accidents.

Interstate 5 runs through the middle of the Battalion with high vehicle traffic, especially commercial vehicles. As the interstate leaves the valley and climbs through the Sacramento River canyon, the roadway is affected by the surrounding terrain. This change in the roadway along with the potential for rapidly changing weather in the winter can make travel difficult to the northern portion of the Battalion. Shasta County Volunteer Company 54 located in Lakehead is the only County Fire resource north of Shasta Lake and relies on a response from the valley for all calls, especially accidents and fires. This becomes more problematic when Interstate 5 is closed due to weather and road conditions.

The Battalion also encompasses Shasta Lake and all the improvements on the lake, including the marinas and private residences around the lake and surrounding communities. Some of the residents around the lake require a response by boat due to the inability to access them from poorly maintained roads. The boats are not staffed all the time and require a response from one of the stations to respond from Bridge Bay Marina.

Shasta County Volunteer Fire Company 33/72 - Bella Vista/Jones Valley

Located in the middle of town on Highway 299 east in Bella Vista is Company 33. The Company is staffed by ten volunteer's total, four of which reside in Jones Valley. This year Amanda Peri took over as Volunteer Fire Chief for Company 33 and 72. December 31st, 2022, Volunteer Chief Ron Smith retired with 30 years of service to Shasta County Fire Department. With the low Volunteer numbers in Jones Valley last year both Company 33 and 72 were consolidated to better serve the citizens of Jones Valley and Bella Vista. In 2022 Companies 33 and 70 were dispatched to 904 calls in their response area. The Company's immediate response area covers about 40 square miles with a population of approximately 2,800. In addition to running calls, Company 33/72 also attended 5,000 hours of training to acquire skills and knowledge to fight wildland and structure fires, assist in medical emergencies, traffic accidents, public assist, and hazardous materials.

Company 33 and 72's protection area includes gas stations, restaurants, churches, post office, grocery store, water district office, elementary school, and several other commercial buildings. The response area includes the heavily traveled Highway 299 East. There is also access to Lake Shasta through Dry Creek Road which accesses two of the marinas on the lake, increasing vehicle traffic in the summer months. Company 33/72 responds closely with Shasta College, Jones Valley, Palo Cedro, and Oak Run.

Battalion VII (cont.)

Shasta County Volunteer Fire Company 54 - Lakehead

Company 54 is in the center of the Lakehead community and provides service to the County area above Shasta Lake. Company 54 is led by Rick Sealana and supplemented by the Reserve Program which currently has 13 Volunteers cleared to participate in the program from various SCFD Stations. Providing service to the approximately 800 homes with nearly 900 permanent residents. Company 54 was dispatched to 216 calls for service in 2022, which is high compared to areas with the same population. The increased call volume can be attributed to Interstate 5 which runs through the center of the response area. In adverse weather the call volume increases dramatically on Interstate 5 mostly due to the increase in motor vehicle collisions. In the summer months, the population of Lakehead increases dramatically with the rise in visitors to the lake and the surrounding forest. The lake and the wilderness area present the issue of long response time as access by vehicle can be very limited or the roads are not in a condition for easy travel. The volunteer recruitment process is active and ongoing in the area to try and increase the volunteer numbers with only 3 full responders in the company. Calls for service include sending equipment from the Shasta College Fire Station and mutual aid from Mountain Gate Fire Protection District. The Volunteer Incorporation recently finished remodeling the station; adding sleeping quarters and updating the kitchen and bathrooms to accommodate the resident firefighter program. The construction finished in December 2021 and the Company along with the Incorporation raised funds to complete the project.



Shasta Cascade Hazardous Materials Response Team



The Shasta Cascade Hazardous Materials Response Team (SCHMRT) is in its 23rd year of operation. The first Letter of Understanding developing the framework to establish SCHMRT was in November of 1999. On June 1st, 2000, SCHMRT went into service. The original SCHMRT was made up of dedicated hard-working men and women from several county agencies and jurisdictions. With a limited budget, the tools and equipment were mostly acquired from donations. These tools and equipment were stored in either the old Haz Mat 24 (old box-style ambulance) or Haz Mat 24 Support (8-person style van).

SCHMRT is a multi-agency team and is made up of men and women from Lassen, Modoc, Shasta, Siskiyou, Tehama and Trinity Counties, California Highway Patrol (CHP) Northern Division, personnel from Anderson Fire Department, Corning Fire Department, Red Bluff Fire Department, Redding Fire Department, Shasta Lake Fire Department, and CAL FIRE. SCHMRT has one dedicated hazardous materials vehicle (Haz Mat 24). Haz Mat 24 stores and transports team members, specialized equipment, and tools to hazardous materials incidents/trainings. In 2013, SCHMRT was certified as a Type II Hazardous Materials Team by CAL EMA (California Emergency Management Agency). The Shasta County Fire Department is the lead agency for SCHMRT. The Team is overseen by a Program Manager and an Operation Director. The Program Manager is CAL FIRE Division Chief Kyle Ferris. The Operation Director is Redding Fire Department Division Chief Eric McMurtrey and Battalion Chief Erick Mattson. SCHMRT is 50-person Type II Team that provides capabilities to identify and work with known and unknown industrial chemicals, provide air monitoring, work with liquid, vapor, and cryogenic materials, ability to monitor Gamma and Beta radiation, plume air modeling, decontamination of individuals with known and unknown chemicals, provide diking absorption, plugging and patching of liquids, solids and vapors, and neutralization of chemicals. Most members on the team are trained to the Hazardous Materials Specialist level (240 hours of training). Funding for the team comes from grants, incident cost recovery, and member agency contributions. Hard work, training, and dedication from team members make SCHMRT what it is today. In 2023, SCHMRT will continue to further educate and train its members during quarterly drills and trainings.

Shasta County Fire Department Boat Program

Lake Shasta is a popular spot for boating, water skiing, camping, house boating, and fishing. Lake Shasta has a surface area of 30,000 acres and 365 miles of shoreline, making it the State's largest reservoir and the third largest body of water after Lake Tahoe and the Salton Sea. Shasta County Fire Department has three Fire-Rescue boats that provide emergency response on Lake Shasta. The fire-rescue boats respond to water rescues, medical aids, boat collisions, boat fires, vegetation fires, search and rescue, and other calls for service. The Fire-Rescue boats are often used on vegetation fires to transport firefighters to areas around the lake inaccessible by roads. The SCFD Boat Program personnel work closely with the Shasta County Sheriff's Boating Safety personnel throughout the entire year, especially during busy holiday weekends and summer months. In 2022, SCFD Boat Program personnel responded to 19 incidents on Lake Shasta and personnel completed approximately 153 hours of training during the Mother's Day and Memorial Day weekends. Due to the reduced water held in Lake Shasta this year we didn't see the number of visitors we normally see at the lake.

Mother's Day and Memorial Day weekends are typically the busiest weekends on Lake Shasta due to the increase of college students from Oregon and California coming to the lake on these weekends. CAL FIRE/SCFD personnel staffed two boats at Bridge Bay Marina again this year for both these holiday weekends.

During the summer months both boats are centrally located at the Shasta County Sheriffs Dock at Bridge Bay Marina. This allows for a quicker response time due to the central location as well as keeping the boats secure. During the winter months one of the boats is left moored at Bridge Bay for emergency response. Over the last two years, the boats were outfitted with a Forward-Looking Infrared System, thanks to a USFS Grant. The FLIR Systems allows our personal to safely navigate Shasta Lake at night and allows the boats to have search and rescue capabilities. In June SCFD Boat Personnel participated in CALFIRE's Camp Cinder Program out on Shasta Lake. SCFD Boat Personnel taught 50 teenage girls about Boating Safety and Water Awareness.



Redding Air Attack Base (RAAB)

The Redding Air Attack Base (RAAB) was established in the late 1960s and is located at the CAL FIRE Northern Operations Center on Airport Road. The RAAB is an interagency base shared by CAL FIRE and the United States Forest Service (USFS).

The Redding Air Attack Base is under the direct supervision of Battalion Chief Tim Shiffer, and consists of two Fire Captains, one Fire Apparatus Engineer, and seven seasonal Firefighters. The complement of aircraft assigned includes Air Attack 240 which is an OV-10 Bronco used as a tactical command aerial firefighting aircraft, and two S-2T air tankers, T-94 and T-95. These air tankers can carry 1,200 gallons of fire retardant. Also assigned to the base on occasion is Air Attack 2CG, a Cessna Citation 550. This aircraft is used as a training platform for new Air Tactical Group Supervisor (ATGS) students. RAAB also had a Sikorski Sky crane 16HT on Exclusive use contract for immediate response to fires.

RAAB has a vast response area, which spans from Red Bluff to the Oregon Border, and from Hayfork to Mt. Lassen. CAL FIRE has strategically located its air resources throughout California, with the goal of providing air resources to any fire incident within 20 minutes.

In 2022 the aircraft based at RAAB delivered a total of 1,135,536 gallons of retardant, which is less than half than of what was delivered in the 2022 season with 3,010,235 gallons. The highest one-day total on record for retardant delivered occurred in 1999, when the base delivered 290,000 gallons of retardant while supporting the Jones Fire in the Bella Vista area. In 2022 Air Attack 240 provided 156 flight hours over fires, Tanker 94 delivered 193,063 gallons of retardant with 181 flight hours and Tanker 95 delivered 197,889 gallons of retardant with 181 flight hours. RAAB responds to 322 calls for service.

Here is the Redding Air Attack Base's totals (in gallons) for retardant delivered for the past six fire seasons:

- 2017 - 1,693,974
- 2018 - 2,769,167
- 2019 - 1,365,161
- 2020 - 2,302,216
- 2021 - 3,010,235
- 2022 - 1,135,536



The USFS at RAAB also provides contracted air tankers. Aircraft contracted include: The BAe-146, RJ-85, MD- 87, C-130, MAFFS (Modular Airborne Firefighting Systems) C-130's provided by the military, Federal Government, and private vendors, and the first 737 conversion air tanker T-137. These air tankers can carry 2,000-4,000 gallons of fire retardant. Redding Air Attack Base was approved in 2017 to reload C-130 air tankers, and it proved to be a success again in 2020. In previous years, the C-130's would have to fly longer distances to reload bases causing them to burn more fuel and longer turnaround times. These aircraft are not permanently assigned to any specific base. Due to the limited number of air tankers, the USFS strategically locates these air tankers based on fire potential & fire activity. Typically, during the fire season, a federal air tanker will be in and out of Redding several times throughout the year.

Shasta County Fire Department EMS

The Shasta County Fire Department (SCFD) EMS Program is overseen by Fire Captain/EMS Coordinator, Steve Chapman. SCFD has the responsibility for all medical aid incidents outside of incorporated cities and districts within Shasta County. It is imperative to provide a high level of care to those who call 911 and request medical assistance. In 2022, the SCFD responded to approximately 3,286 medical calls, and approximately 400 traffic collisions. Approximately 1,300 of these calls were in the outer lying areas of Shasta County. These are areas where ambulance response times are the longest, on average about 30 minutes. This requires the responders to care for the patients for an extended period of time, requiring them to be proficient in their knowledge, skills and abilities. The Department dedicated two and a half months every year to EMS training; delivering over 1,000 hours of EMS instruction.



Each year sees new challenges in the EMS field, ranging from increased skills to new products to improve patient care. Shasta County falls within the Sierra-Sacramento Valley Local Emergency Medical Service Agency (S-SV). S-SV dictates the policy and procedures for how medical emergencies are handled and equipment is used. The SCFD EMS Coordinator is the point of contact for S-SV, as well as ensuring all EMS training, equipment purchasing and record compliance is completed and maintained.

Last year, SCFD started to implement epinephrine auto injectors to the stations, with anticipation to have at least one per station by early 2023. This is an approved BLS optional skill by S-SV in which all our responders are familiar with using as part of our annual EMS training. This will provide the necessary care to those suffering from severe allergic reactions, especially for those residents in the rural areas of Shasta County where there are extended ambulance response times. SCFD also helped re-write the S-SV policy regarding the alternate use transport vehicles. The Department has four approved rescues to help alleviate the long response times from the ambulances. Those four approved rescues can transport the patients to a landing zone for an awaiting helicopter, rendezvous with an incoming ambulance and in certain cases, transport the patient straight to the receiving hospital.



**This report has been prepared by the
CAL FIRE / Shasta County Fire Department**

www.shastacountyfire.org