



## WASTE COLLECTION



There will be a one-day delay in waste pick up for New Year's Day

Waste management plays a critical role in protecting the environment and our health. Virtually every aspect of our daily lives generates waste, and it adds up quickly. Did you know that, on average each year, 1,500 pounds of waste per person goes into a landfill? That's a lot of waste to be collected. To ensure a smooth solid waste pick up, try adopting these rules:

- Segregate your garbage. Are there any items that can be recycled or repurposed?
- Help keep smell down and creatures out of the trash by bagging your trash.
- Make sure lids are closed all the way and waste bins are not overflowing
- Place waste bins within 18 inches of the curb or at the edge of street if in a rural area
- Increase container size if needed
- Do not place rocks, concrete, bricks, or dirt inside carts
- Keep electronics and hazardous waste out of your waste bin (e.g., TVs/monitors, computers, motor oil, batteries, pesticides, paint, etc.)
- Do not block access to the waste bin (e.g., basketball hoops, cars, mailboxes, lamp posts, etc.)
- Place waste bins out by 6:00 AM on the day of pick up and be aware of holiday collection schedules

### TREE DISPOSAL

WM customers may place outside, next to their waste bin, undecorated Christmas trees cut in sections no greater than 4 feet (not weighing more than 50 lbs.) the first two weeks in January for collection



### SHASTA LAKE RESIDENTS ONLY

The City of Shasta Lake, in partnership with Caltrans and WM, will host a FREE DUMP DAY at the Gateway Industrial Park on Saturday, January 20, 2024. Residents will be able to dump household trash, large and bulky items, metal, appliances, and mattresses. Vouchers with event details will be mailed directly to residents prior to the event, so keep an eye out!

For more information, please contact the City of Shasta Lake at 530-275-7400.



# REPORT AND STOP ILLEGAL DUMPING

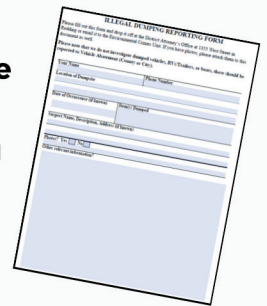


1-866-61-TRASH

## ENVIRONMENTAL CRIMES UNIT

A District Attorney Investigator and Investigative Technician are assigned to the Environmental Crimes Unit. The sole purpose of this unit is the investigation of people who illegally dump on public or private land in Shasta County.

To report illegal dumping call 1-866-61-TRASH or email the Illegal Dumping Reporting form and any photos to the Environmental Crimes Unit. In-progress illegal dumping should be immediately reported to the non-emergency number of the local law enforcement agency having jurisdiction.



[https://www.shastacounty.gov/sites/default/files/fileattachments/district\\_attorney/page/2875/illegal-dumping-reporting-form.pdf](https://www.shastacounty.gov/sites/default/files/fileattachments/district_attorney/page/2875/illegal-dumping-reporting-form.pdf)

### Why do people illegally dump?

Illegal dumping is usually done for economic gain due to the dumper believing they can't afford the disposal fee. However, most of what is thrown on the side of the road can be disposed of for FREE. Mattresses, metal mattress frames, used motor oil, bottles and cans, paint, electronics, pesticides and other household hazardous waste, sharps, and medications can all be disposed of year round for FREE in Shasta County. To locate a free disposal site, call (530) 225-5789 or email [recycle@co.shasta.ca.us](mailto:recycle@co.shasta.ca.us).

### Why does it take so long for Shasta County to pick up illegally dumped items?

- The cleanup of illegally disposed items requires the collaboration of multiple departments, organizations, and/or businesses. Ex. DMV, CalTrans, County Depts, Private Haulers, etc.
- Property rights must be researched.
- Funding & staff must be available.
- Agency reports must be filed.
- Legal notices may need to be served.

### How can I discourage illegal dumping?

- Light outdoor areas around your home and property
- Use surveillance cameras to record illegal dumping
- Trim bushes, cut weeds, and maintain a clean environment
- Waste attracts more waste. Volunteer to clean up existing illegal dump sites.
- Educate friends, family, and neighbors on FREE disposal options available in Shasta County. Follow us on [Facebook.com/recycleshasta](https://www.facebook.com/recycleshasta).
- Report illegal dumping

Did you know an RV has to be broken down into both solid and hazardous waste to dispose of it?

Please direct newsletter comments to:  
Shasta County Department of Resource Management  
1855 Placer Street, Suite 200, Redding, CA 96001  
[recycle@co.shasta.ca.us](mailto:recycle@co.shasta.ca.us)  
(530) 225-5789 or (800) 528-2850



Please direct disposal service calls to:  
WM  
18592 Commercial Way, Redding, CA 96002  
[www.wm.com](http://www.wm.com)  
(530) 221-4784 or (530) 221-6526

Trash Talk is printed on recycled paper in partnership with Shasta County, the Cities of Anderson and Shasta Lake, and WM, Inc.